



THE ARC

DISPLAY HOME

Introducing the Arc Display by Domination Homes – an embodiment of luxury, innovation and architectural excellence.



This two-storey masterpiece exemplifies Domination Homes' commitment to bespoke craftsmanship and the finest in contemporary design, setting a benchmark for luxury living in Perth.

This exceptional home welcomes you with an impressive curved façade, framing the entry with a unique sculptural presence that commands attention. Layered with diverse textures, including polished plaster, brickwork, aggregate and thoughtfully incorporated softscaping. The Arc Display harmonises these contrasting materials to create a dynamic yet elegant aesthetic. Black window frame accents add geometric depth, while an underlit plinth illuminates the staircase and entryway offering a striking focal point upon arrival.

Inside, the open-plan kitchen, living and dining areas are seamlessly interconnected, with abundant natural light and views of the serene backyard and pool. The kitchen showcases the union of functionality and luxury, featuring ample storage, a built-in refrigerator and a smooth transition into a spacious scullery and pantry. The living area is complemented by custom cabinetry that adds warmth and sophistication to the space.



The backyard serves as an oasis of comfort, providing versatile entertaining options throughout the year. Elegant pool tiling and built-in seating create an inviting space to relax, while arched brick details around the pool enhance the design's cohesive flow.

For entertainment, the home theatre offers a fully immersive cinematic experience, complete with acoustic ceiling panelling for exceptional sound quality, a built-in bar for refreshments, and tiered seating that's perfect for family movie nights or hosting friends for a film marathon.

The guest bedroom, located on the main floor, offers a warm and welcoming retreat for visitors. With a private bathroom, ample storage and a thoughtfully integrated TV nook, it's a space that combines comfort and convenience, whilst providing guests with a true "home away from home."

Upstairs, a tranquil sitting room serves as an ideal workspace or study area, with a nearby kitchenette for convenience.



The master suite is the pinnacle of luxury, an opulent sanctuary designed to offer an escape from the everyday. Curved wall detailing frames the bed, creating a striking yet serene focal point, while a polished plaster feature wall adds a layer of sophisticated texture. A purpose-built makeup station is a luxurious addition, offering a dedicated space to prepare for the day in comfort.

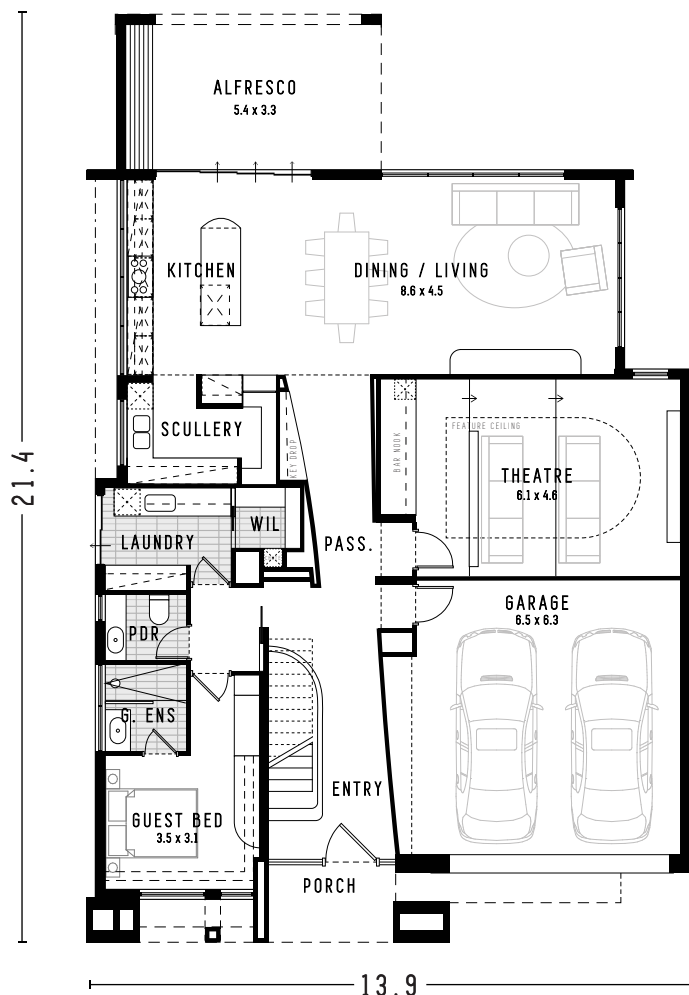
Every aspect of the Arc Display reflects Domination Homes' dedication to timeless luxury, quality and client-focused design. From the thoughtfully integrated materials to the functional yet beautiful spaces, this display home exemplifies why Domination Homes is a leader in luxury home building, delivering not just a house, but a lifestyle crafted with precision and passion.

DH
DOMINATION
homes

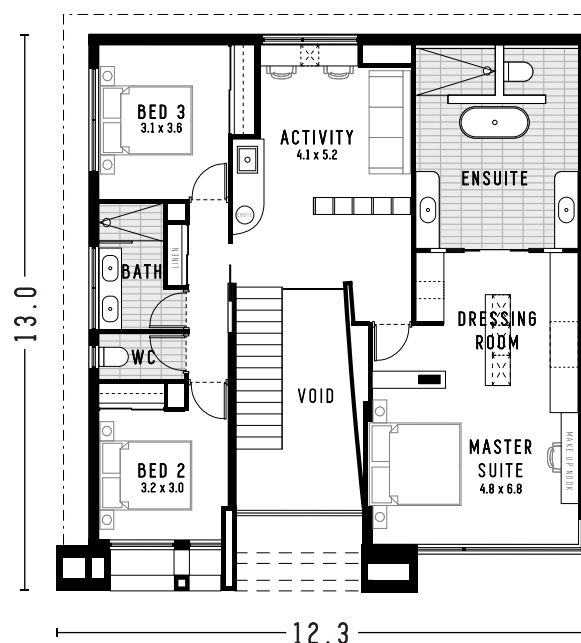
DESIGNED ON INNOVATION,
BUILT ON TRADITION

THE ARC

FLOOR PLAN



GROUND FLOOR



UPPER FLOOR

AREAS					
Floor	Location	Area (m ²)	Floor	Location	Area (m ²)
Ground Floor			Upper Floor		
	Living	167.68m ²		Living	139.52m ²
	Garage	44.89m ²			
	Alfresco	18.96 ²			
	Porch	6.39m ²			
Total Ground Floor		237.92m ²	Total Upper Floor		139.52m ²
Total Combined Ground & Upper Floor					377.44m ²

Display Home

86 Grindleford Drive,
Balcatta

Opening Times

Visit: dominationhomes.com.au
for up to date opening
hours

DESIGNED ON INNOVATION, BUILT ON TRADITION



DH
DOMINATION
homes

T: +61 8 9262 7400 | E: enquiries@dominationhomes.com.au | W: dominationhomes.com.au
1/43 Westchester Road, Malaga Western Australia 6090 | PO Box 3335 Malaga WA 6944

Carrisa Pty Ltd BC 5975