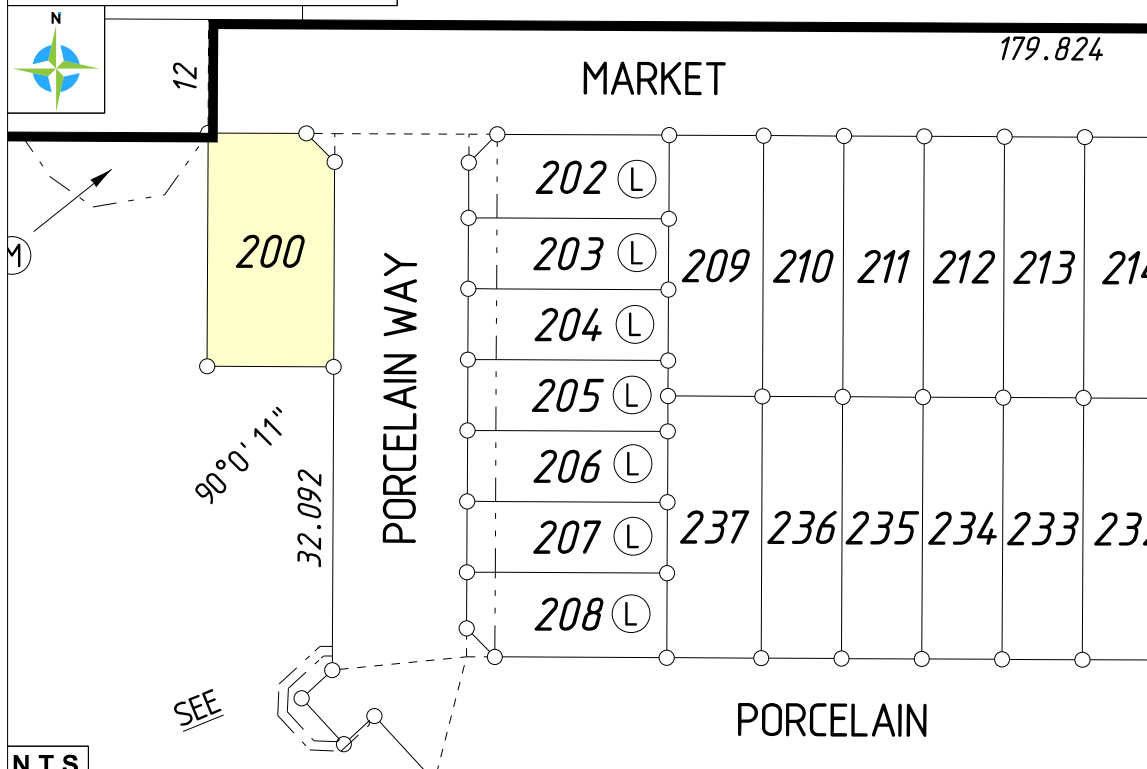
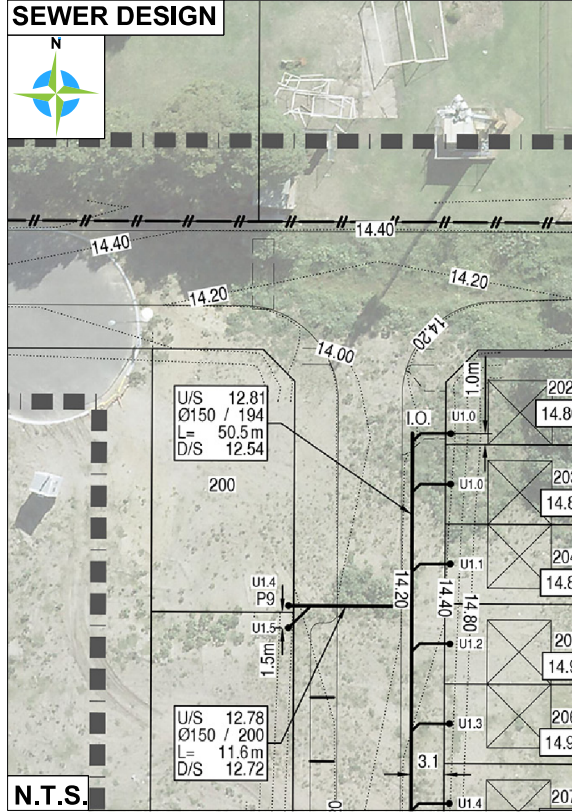
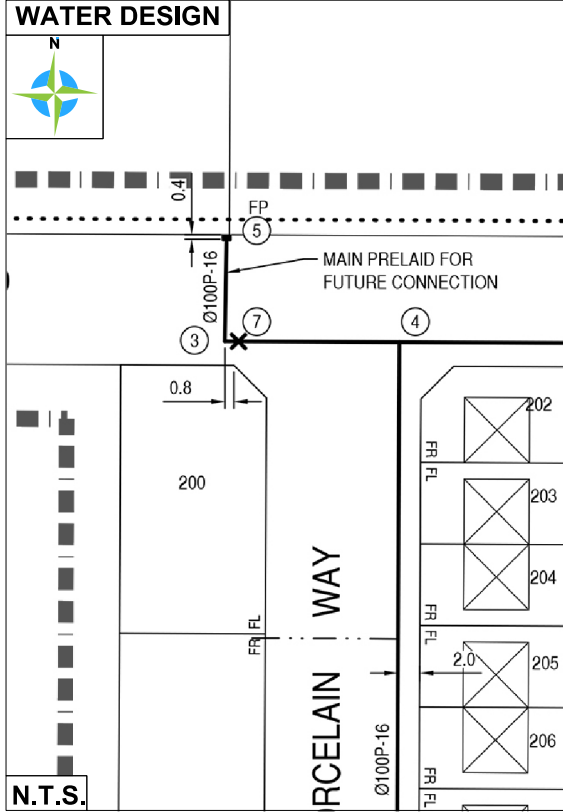




| | | | | | |
|--|--|--|--|--------------------|--|
| ESTATE NAME | | CLIENT NAME | | CONTRACT / JOB No. | |
| MOSAIC STAGE 4 LOT 200 | | UBD MAP REF: P. 227, L15 & M15 - P. 227, L16 & M16 | | | |
| | | LOCATION LOCALITY Balcatta LOC. AUTH. City of Stirling | | | |
| D.P. 422236 | | Volume | | Folio | |
| DEPOSITED PLAN:- 422236 | | | | | |
|  | | | | | |
| N.T.S. | | | | | |
| SEWER DESIGN | | | WATER DESIGN | | |
|  | | |  | | |
| N.T.S. | | | N.T.S. | | |
|  | | |  | | |
| <p>MCMULLEN NOLAN GROUP Level 1, 2 Sabre Crescent Jandakot, W.A. 6164 PO Box 3526, Success W.A. 6964, Australia Offices in: Perth Melbourne Kimberley South West WA</p> <p>Tel: (08) 6436 1599 Fax: (08) 6436 1500 info@mngsurvey.com.au www.mngsurvey.com.au ABN 90 009 363 311</p> | | | <p>All dimensions, areas and engineering are design only and subject to survey. The particulars on this brochure are supplied for information only and shall not be taken as a representation in any respect on the part of the Vendor or its agent. Authorities should be consulted when services are contained within lot boundaries as building restrictions may apply.</p> <p>All retaining wall widths, services and associated easements are shown exaggerated for clarity. Ref: 98975lip-057c Date: 30/09/2022</p> | | |

LEGEND (DESIGN)

WATER

WATER METER ABOVE GROUND

WATER LINE

STOP VALVE

HYDRANT

DRAINAGE

DRAINAGE LINE

SW MANHOLE

GRATE

SIDE ENTRY PIT

COMBINATION PIT

SUBSOIL DRAINAGE LINE

MANHOLE

SEWERAGE

SEWER MANHOLE

SEWER LINE

POWER

POWER DOME

MINI PILLAR

UNIVERSAL PILLAR

STREET LIGHT

TRANSFORMER

COMMUNICATION

NATIONAL BROADBAND NETWORK (NBN)

GAS

GAS METER

RETAINING WALL & FENCES

LIMESTONE RETAINING WALL

NOISE WALL

TOP OF WALL

RETAINING WALL WITH STAIRS

CHAINLINK FENCE

COLOURBOND FENCE

*COLOURBOND FENCING TO BE INSTALLED AT STANDARD 1.8m HIGH.

KERB TYPE

ROAD KERB

MOUNTABLE KERB

BARRIER KERB

FLUSH KERB

SEMI-MOUNTABLE KERB

KERB TRANSITION

EASEMENTS

ACCESS RESTRICTION

129BA RESTRICTED COVENANT

70A NOISE COMPLIANCE

LEVELS

SPOT HEIGHT

FEATURES

FOOTPATH

GARAGE LOCATION

RESIDENTIAL DENSITY (R CODES)

R60

SERVICE RECORD

| SERVICE | STATUS | DESIGN | CONFIRM | |
|---------------------------|--------|--------|-----------|------------|
| | | | AVAILABLE | NO SERVICE |
| WATER | ✓ | | | |
| SEWER | ✓ | | | |
| GAS | ✓ | | | |
| NBN | ✓ | | | |
| POWER | ✓ | | | |
| STORMWATER CONNECTION PIT | ✓ | | | |

NOTE: Services marked as Designed but will require builder/client to confirm position on site.

SCALE 1 : 200 @ A3

ALL DISTANCES ARE IN METRES

For a true to scale reproduction of this plan, plot it to A3 with the Paging Scaling set to None.

GDA 2020

LATITUDE: -31° 53' 20.33"

LONGITUDE: 115° 49' 21.77"

SOIL DESCRIPTION

SAND

LOT MISCLOSE

0.000

[illegible]

LEGEND (DESIGN)

WATER

WATER METER ABOVE GROUND

WATER LINE

STOP VALVE

HYDRANT

DRAINAGE

DRAINAGE LINE

SW MANHOLE

GRATE

SIDE ENTRY PIT

COMBINATION PIT

SUBSOIL DRAINAGE LINE

MANHOLE

SEWERAGE

SEWER MANHOLE

SEWER LINE

POWER

POWER DOME

MINI PILLAR

UNIVERSAL PILLAR

STREET LIGHT

TRANSFORMER

COMMUNICATION

NATIONAL BROADBAND NETWORK (NBN)

GAS

GAS METER

RETAINING WALL & FENCES

LIMESTONE RETAINING WALL

NOISE WALL

TOP OF WALL

RETAINING WALL WITH STAIRS

CHAINLINK FENCE

COLOURBOND FENCE

*COLORBOND FENCING TO BE INSTALLED AT STANDARD 1.8m HIGH.

KERB TYPE

ROAD KERB

MOUNTABLE KERB

BARRIER KERB

FLUSH KERB

SEMI-MOUNTABLE KERB

KERB TRANSITION

EASEMENTS

ACCESS RESTRICTION

129BA RESTRICTED COVENANT

70A NOISE COMPLIANCE

LEVELS

SPOT HEIGHT

FEATURES

FOOTPATH

GARAGE LOCATION

RESIDENTIAL DENSITY (R CODES)

R60

SERVICE RECORD

| SERVICE | STATUS | DESIGN | CONFIRM | | |
|---------------------------|--------|--------|-----------|------------|---------|
| | | | AVAILABLE | NO SERVICE | CONFIRM |
| WATER | | | | | |
| SEWER | | | | | |
| GAS | | | | | |
| NBN | | | | | |
| POWER | | | | | |
| STORMWATER CONNECTION PIT | | | | | |

NOTE: Services marked are Designed but will require builder/client to confirm position on site.

SCALE 1 : 200 @ A3

ALL DISTANCES ARE IN METRES

For a true to scale reproduction of this plan, plot it to A3 with the Paging Scaling set to None.

0 10

z

GDA 2020
LATITUDE: -31° 53' 20.59"
LONGITUDE: 115° 49' 21.77"

SOIL DESCRIPTION
SAND

LOT MISCLOSE
0.000

[illegible]

LEGEND (DESIGN)

WATER

WATER METER ABOVE GROUND

WATER LINE

STOP VALVE

HYDRANT

DRAINAGE

DRAINAGE LINE

SW MANHOLE

GRATE

SIDE ENTRY PIT

COMBINATION PIT

SUBSOIL DRAINAGE LINE

MANHOLE

SEWERAGE

SEWER MANHOLE

SEWER LINE

POWER

POWER DOME

MINI PILLAR

UNIVERSAL PILLAR

STREET LIGHT

TRANSFORMER

COMMUNICATION

NATIONAL BROADBAND NETWORK (NBN)

GAS

GAS METER

RETAINING WALL & FENCES

LIMESTONE RETAINING WALL

NOISE WALL

TOP OF WALL

RETAINING WALL WITH STAIRS

CHAINLINK FENCE

COLOURBOND FENCE

*COLOURBOND FENCING TO BE INSTALLED AT STANDARD 1.8m HIGH.

KERB TYPE

ROAD KERB

MOUNTABLE KERB

BARRIER KERB

FLUSH KERB

SEMI-MOUNTABLE KERB

KERB TRANSITION

EASEMENTS

ACCESS RESTRICTION

129BA RESTRICTED COVENANT

70A NOISE COMPLIANCE

LEVELS

SPOT HEIGHT

FEATURES

FOOTPATH

GARAGE LOCATION

RESIDENTIAL DENSITY (R CODES)

R60

SERVICE RECORD

| SERVICE | STATUS | DESIGN | | | CONFIRM |
|---------------------------|--------|--------|-----------|------------|---------|
| | | DESIGN | AVAILABLE | NO SERVICE | |
| WATER | ✓ | ✓ | ✓ | ✓ | ✓ |
| SEWER | ✓ | ✓ | ✓ | ✓ | ✓ |
| GAS | ✓ | ✓ | ✓ | ✓ | ✓ |
| NBN | ✓ | ✓ | ✓ | ✓ | ✓ |
| POWER | ✓ | ✓ | ✓ | ✓ | ✓ |
| STORMWATER CONNECTION PIT | ✓ | ✓ | ✓ | ✓ | ✓ |

SCALE 1 : 200 @ A3

GDA 2020

LATITUDE: -31° 53' 20.83"

LONGITUDE: 115° 49' 21.77"

SOIL DESCRIPTION

SAND

LOT MISCLOSE

0.000

| | |
|--|---|
| <div>ESTATE NAME</div> <div>MOSAIC</div> <div>STAGE 4</div> <div>LOT 204</div> | <div>CLIENT NAME</div> <div>CONTRACT / JOB No.</div> <div>UBD MAP REF: P. 227. L15 & M15- P. 227. L16 & M16</div> <div>LOCATION</div> <div>LOCALITY Balcatta</div> <div>LOC. AUTH. City of Stirling</div> <div>D.P. 422236</div> <div>Volume</div> <div>Folio</div> |
|--|---|

DEPOSITED PLAN:- 422236

179.824

MARKET

PORCELAIN WAY

PORCELAIN

SEE

90°0'11"

32.092

200

202 L

203 L

204 L

205 L

206 L

207 L

208 L

209

210

211

212

213

214

215

216

237

236

235

234

233

232

231

230

130

131

132

SEWER DESIGN

WATER DESIGN

MC MULLEN NOLAN GROUP

Level 1, 2 Sabre Crescent

Jandakot, W.A. 6164

PO Box 3526, Success

W.A. 6964, Australia

Offices in: Perth | Melbourne | Kimberley | South West WA

Tel: (08) 6436 1599

Fax: (08) 6436 1500

info@mngsurvey.com.au

www.mngsurvey.com.au

ABN 90 009 363 311

ISO 9001 AS/NZS 4801

Global-Mark.com.au

All dimensions, areas and engineering are design only and subject to survey. The particulars on this brochure are supplied for information only and shall not be taken as a representation in any respect on the part of the Vendor or its agent. Authorities should be consulted when services are contained within lot boundaries as building restrictions may apply.

All retaining wall widths, services and associated easements are shown exaggerated for clarity.

Ref: 98975lip-057c Date: 30/09/2022

LEGEND (DESIGN)

WATER

WATER METER ABOVE GROUND

WATER LINE

STOP VALVE

HYDRANT

DRAINAGE

DRAINAGE LINE

SW MANHOLE

GRATE

SIDE ENTRY PIT

COMBINATION PIT

SUBSOIL DRAINAGE LINE

MANHOLE

SEWERAGE

SEWER MANHOLE

SEWER LINE

POWER

POWER DOME

MINI PILLAR

UNIVERSAL PILLAR

STREET LIGHT

TRANSFORMER

COMMUNICATION

NATIONAL BROADBAND NETWORK (NBN)

GAS

GAS METER

RETAINING WALL & FENCES

LIMESTONE RETAINING WALL

NOISE WALL

TOP OF WALL

RETAINING WALL WITH STAIRS

CHAINLINK FENCE

COLOURBOND FENCE

*COLOURBOND FENCING TO BE INSTALLED AT STANDARD 1.8m HIGH.

KERB TYPE

ROAD KERB

MOUNTABLE KERB

BARRIER KERB

FLUSH KERB

SEMI-MOUNTABLE KERB

KERB TRANSITION

EASEMENTS

ACCESS RESTRICTION

129BA RESTRICTED COVENANT

70A NOISE COMPLIANCE

LEVELS

SPOT HEIGHT

FEATURES

FOOTPATH

GARAGE LOCATION

RESIDENTIAL DENSITY (R CODES)

R60

SERVICE RECORD

| SERVICE | STATUS | DESIGN | SERVICE | | CONFIRM |
|---------------------------|--------|--------|-----------|------------|---------|
| | | | AVAILABLE | NO SERVICE | |
| WATER | ✓ | ✓ | | | |
| SEWER | ✓ | ✓ | | | |
| GAS | ✓ | ✓ | | | |
| NBN | ✓ | ✓ | | | |
| POWER | ✓ | ✓ | | | |
| STORMWATER CONNECTION PIT | ✓ | ✓ | | | |

SCALE 1 : 200 @ A3

ALL DISTANCES ARE IN METRES

For a true to scale reproduction of this plan, plot it to A3 with the Paging Scaling set to None.

SOIL DESCRIPTION

SAND

LOT MISCLOSE

0.000

GDAL 2020

LATITUDE: -31° 53' 21.07"

LONGITUDE: 115° 49' 21.77"

[illegible]

LEGEND (DESIGN)

WATER

WATER METER ABOVE GROUND

WATER LINE

STOP VALVE

HYDRANT

DRAINAGE

DRAINAGE LINE

SW MANHOLE

GRATE

SIDE ENTRY PIT

COMBINATION PIT

SUBSOIL DRAINAGE LINE

MANHOLE

SEWERAGE

SEWER MANHOLE

SEWER LINE

POWER

POWER DOME

MINI PILLAR

UNIVERSAL PILLAR

STREET LIGHT

TRANSFORMER

COMMUNICATION

NATIONAL BROADBAND NETWORK (NBN)

GAS

GAS METER

RETAINING WALL & FENCES

LIMESTONE RETAINING WALL

NOISE WALL

TOP OF WALL

RETAINING WALL WITH STAIRS

CHAINLINK FENCE

COLOURBOND FENCE

*COLOURBOND FENCING TO BE INSTALLED AT STANDARD 1.8m HIGH.

KERB TYPE

ROAD KERB

MOUNTABLE KERB

BARRIER KERB

FLUSH KERB

SEMI-MOUNTABLE KERB

KERB TRANSITION

EASEMENTS

ACCESS RESTRICTION

129BA RESTRICTED COVENANT

70A NOISE COMPLIANCE

LEVELS

SPOT HEIGHT

FEATURES

FOOTPATH

GARAGE LOCATION

RESIDENTIAL DENSITY (R CODES)

R60

SERVICE RECORD

| SERVICE | STATUS | DESIGN | | | CONFIRM |
|---------------------------|--------|--------|-----------|------------|---------|
| | | DESIGN | AVAILABLE | NO SERVICE | |
| WATER | ✓ | | | | |
| SEWER | ✓ | | | | |
| GAS | ✓ | | | | |
| NBN | ✓ | | | | |
| POWER | ✓ | | | | |
| STORMWATER CONNECTION PIT | ✓ | | | | |

NOTE: Services marked are Designed but will require builder/client to confirm position on site.

SCALE 1 : 200 @ A3

ALL DISTANCES ARE IN METRES

For a true to scale reproduction of this plan, plot it to A3 with the Paging Scaling set to None.

GDA 2020

LATITUDE: -31° 53' 21.31"

LONGITUDE: 115° 49' 21.77"

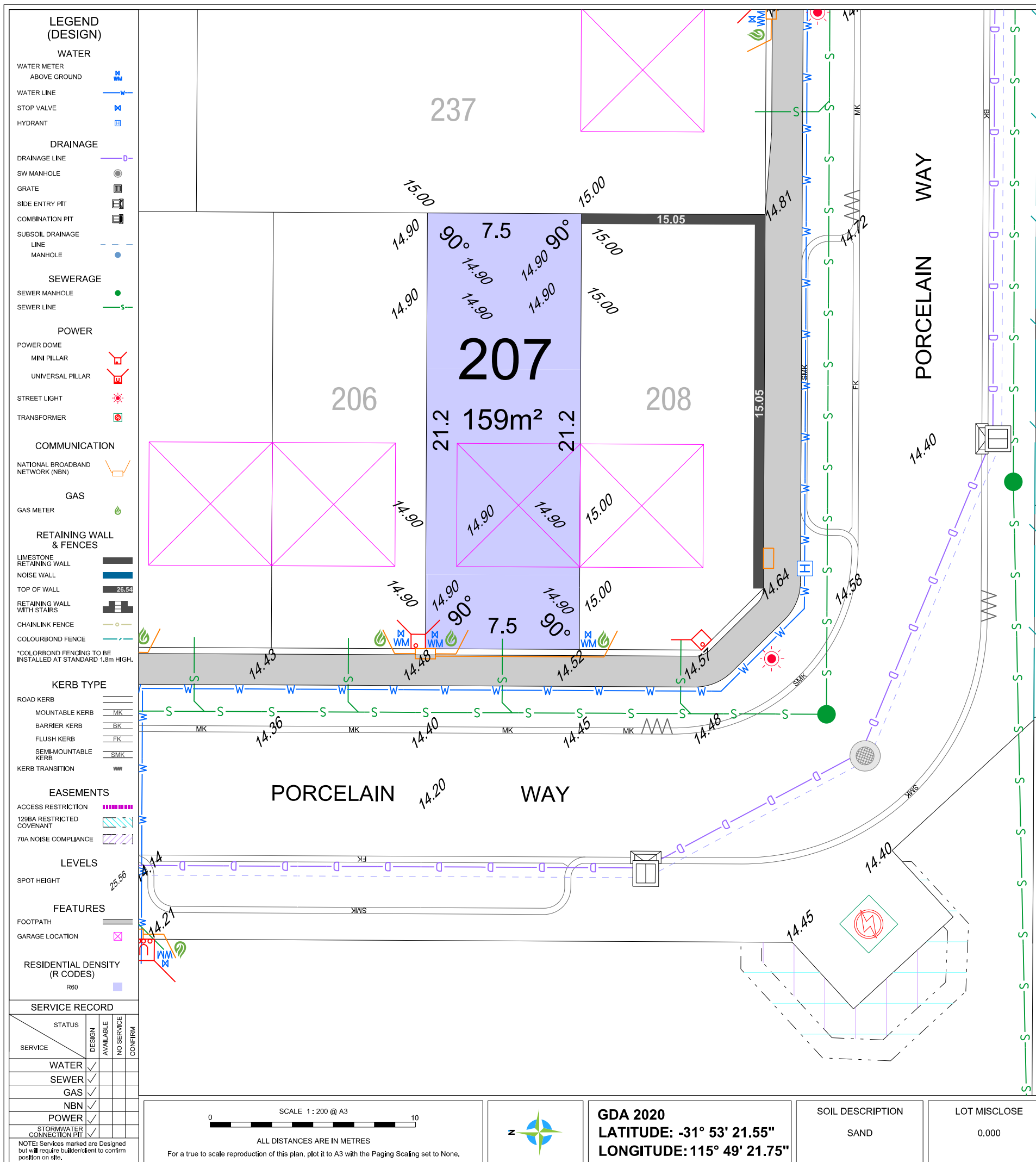
SOIL DESCRIPTION

SAND

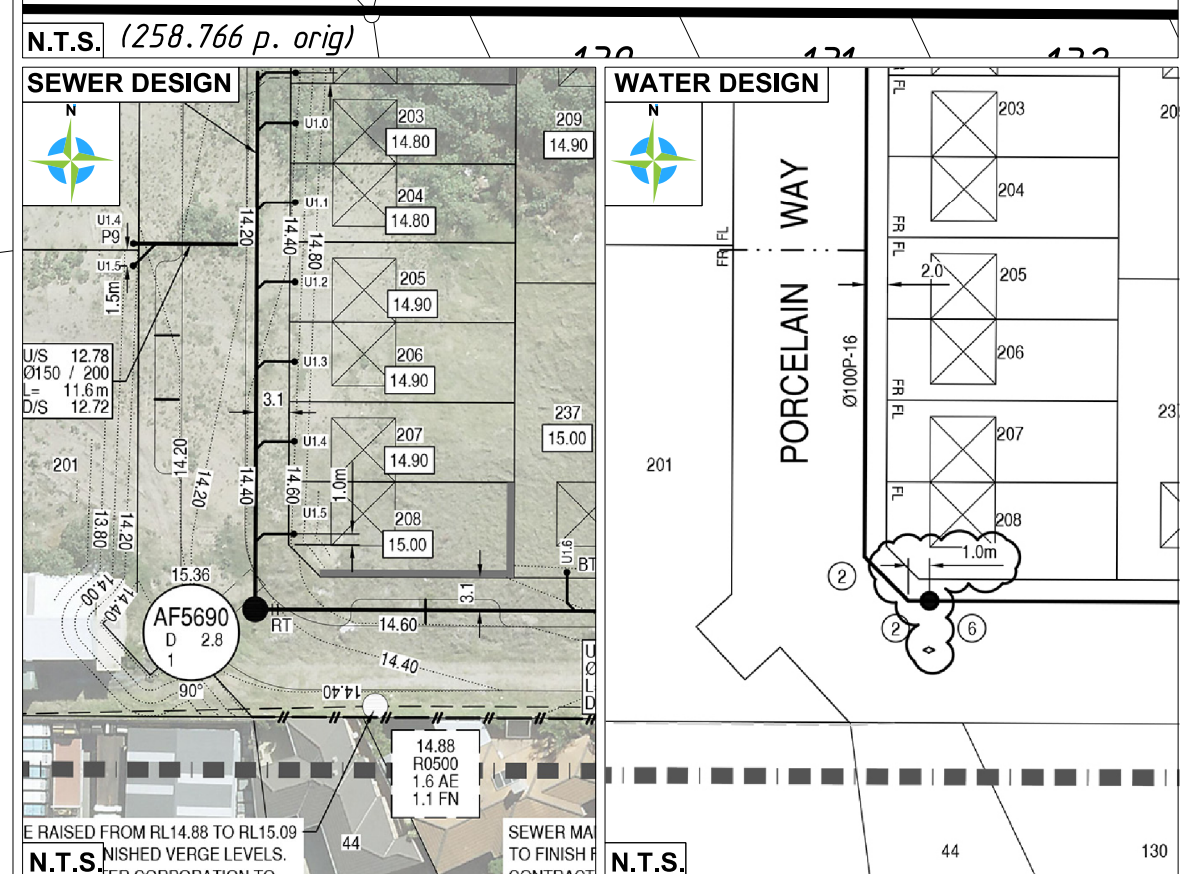
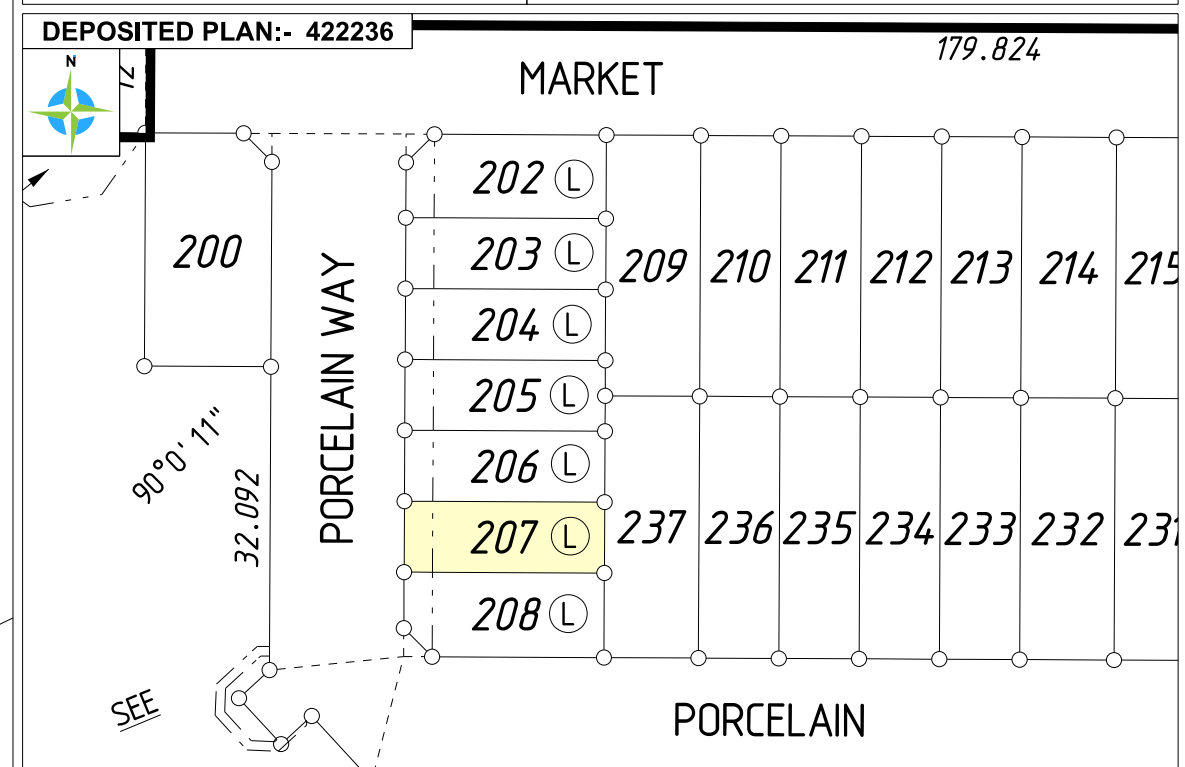
LOT MISCLOSE

0.000

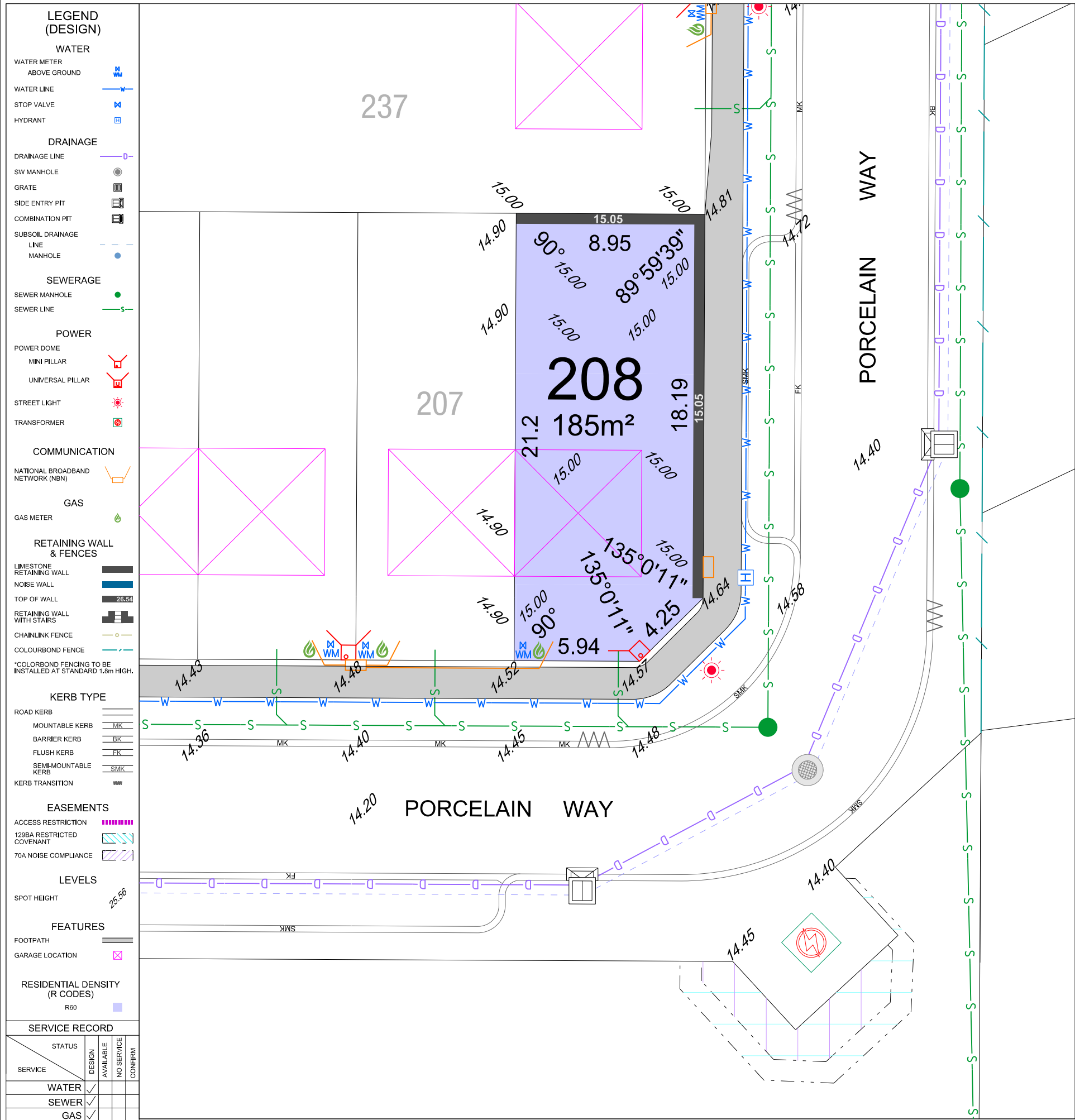
| ESTATE NAME | | CLIENT NAME | CONTRACT / JOB No. |
|--|--|---|--------------------|
| MOSAIC STAGE 4 LOT 206 | | UBD MAP REF: P. 227. L15 & M15- P. 227. L16 & M16 | |
| | | LOCATION LOCALITY Balcatta LOC. AUTH. City of Stirling | |
| | | D.P. 422236 | Volume Folio |
| DEPOSITED PLAN:- 422236 | | | |
| | | | |
| | | | |
| | | | |
| | | | |
| <p>MCMULLEN NOLAN GROUP Level 1, 2 Sabre Crescent Jandakot, W.A. 6164 PO Box 3526, Success W.A. 6964, Australia Offices in: Perth Melbourne Kimberley South West WA</p> <p>Tel: (08) 6436 1599 Fax: (08) 6436 1500 info@mngsurvey.com.au www.mngsurvey.com.au ABN 90 009 363 311</p> | | <p>All dimensions, areas and engineering are design only and subject to survey. The particulars on this brochure are supplied for information only and shall not be taken as a representation in any respect on the part of the Vendor or its agent. Authorities should be consulted when services are contained within lot boundaries as building restrictions may apply.</p> <p>All retaining wall widths, services and associated easements are shown exaggerated for clarity.</p> <p>Ref: 98975lip-057c Date: 30/09/2022</p> | |



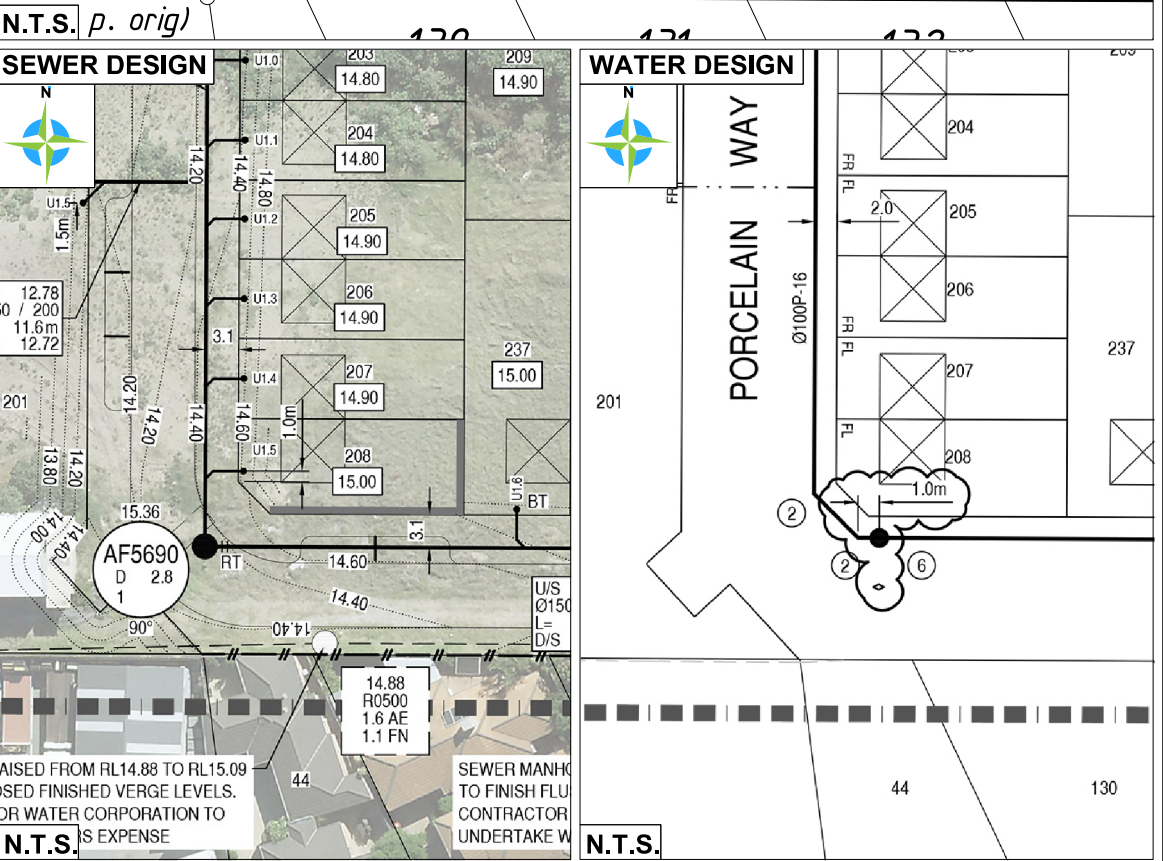
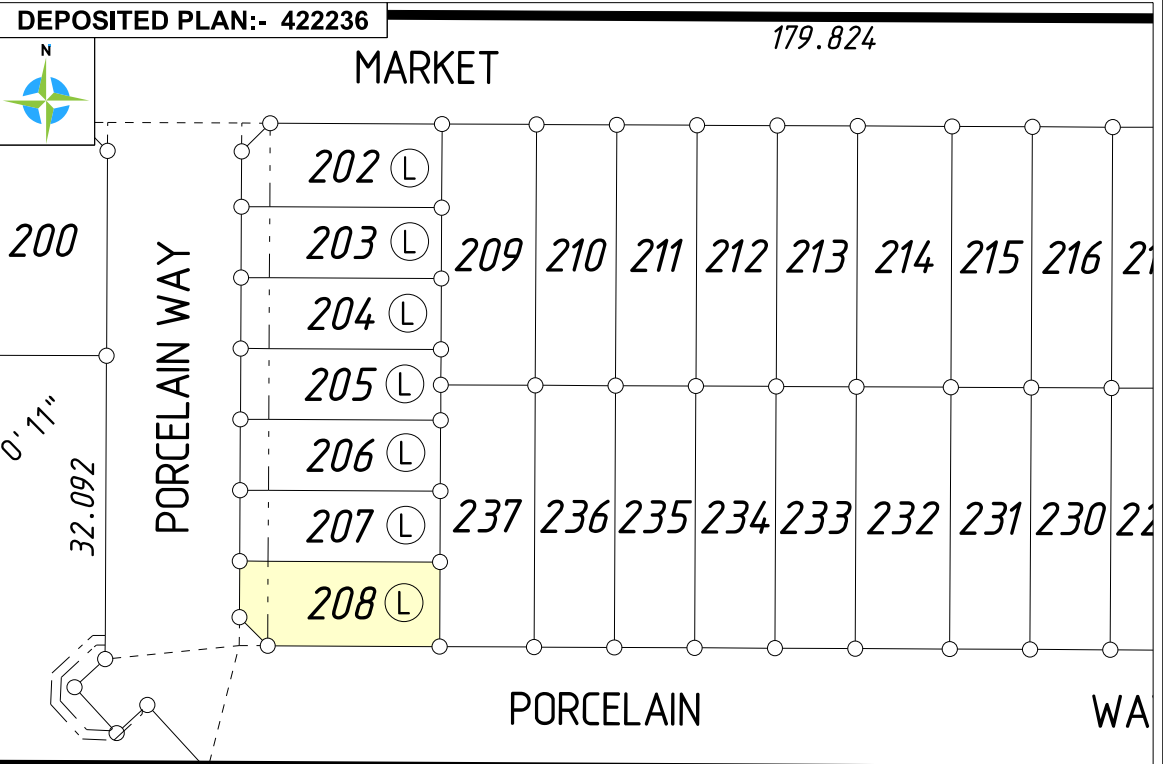
| | | | | |
|-------------|-------------|------------------|-------|--|
| ESTATE NAME | CLIENT NAME | | | CONTRACT / JOB No. |
| | MOSAIC | | | UBD MAP REF: P. 227. L15 & M15- P. 227. L16 & M16 |
| STAGE 4 | LOCATION | | | |
| LOT 207 | LOCALITY | Balcatta | | |
| | LOC. AUTH. | City of Stirling | | |
| | D.P. 422236 | Volume | Folio | |



| | | | |
|---|--|---|---|
|  <p>MCMULLEN NOLAN GROUP Level 1, 2 Sabre Crescent Landolot, W.A. 6154 PO Box 3526, Success W.A. 6964, Australia Offices in: Perth Melbourne Kimberley South West WA</p> | <p>TEL: (08) 6436 1599 TEL: (08) 6436 1500 Email: info@mngsurvey.com.au www.mngsurvey.com.au ABN 90 009 363 311</p> |  <p>ISO 9001 AS/NZS 4801 ISO 9001 GlobalMark.com.au</p> | <p>All dimensions, areas and engineering are design only and subject to survey. The particulars on this brochure are supplied for information only and shall not be taken as a representation in any respect on the part of the Vendor or Its agent. Authorities should be consulted when services are contained within lot boundaries as building restrictions may apply.</p> <p>All retaining wall widths, services and associated easements are shown exaggerated for clarity.</p> <p>Ref: 98975lip-057c Date: 30/09/2022</p> |
|---|--|---|---|



| | | |
|-------------|-----------------------------|--------------------------------------|
| ESTATE NAME | CLIENT NAME | CONTRACT / JOB No. |
| MOSAIC | | |
| STAGE 4 | LOCATION | UBD MAP REF: |
| LOT 208 | LOCALITY Balcatta | P. 227, L15 & M15- P. 227, L16 & M16 |
| | LOC. AUTH. City of Stirling | |
| | D.P. 422236 | Volume Folio |



LEGEND (DESIGN)

WATER

WATER METER ABOVE GROUND

WATER LINE

STOP VALVE

HYDRANT

DRAINAGE

DRAINAGE LINE

SW MANHOLE

GRATE

SIDE ENTRY PIT

COMBINATION PIT

SUBSOIL DRAINAGE LINE

MANHOLE

SEWERAGE

SEWER MANHOLE

SEWER LINE

POWER

POWER DOME

MINI PILLAR

UNIVERSAL PILLAR

STREET LIGHT

TRANSFORMER

COMMUNICATION

NATIONAL BROADBAND NETWORK (NBN)

GAS

GAS METER

RETAINING WALL & FENCES

LIMESTONE RETAINING WALL

NOISE WALL

TOP OF WALL

RETAINING WALL WITH STAIRS

CHAINLINK FENCE

COLOURBOND FENCE

*COLOURBOND FENCING TO BE INSTALLED AT STANDARD 1.8m HIGH.

KERB TYPE

ROAD KERB

MOUNTABLE KERB

BARRIER KERB

FLUSH KERB

SEMI-MOUNTABLE KERB

KERB TRANSITION

EASEMENTS

ACCESS RESTRICTION

129BA RESTRICTED COVENANT

70A NOISE COMPLIANCE

LEVELS

SPOT HEIGHT

FEATURES

FOOTPATH

GARAGE LOCATION

RESIDENTIAL DENSITY (R CODES)

R60

SERVICE RECORD

| SERVICE | STATUS | DESIGN | SERVICE | | CONFIRM |
|---------------------------|--------|--------|-----------|------------|---------|
| | | | AVAILABLE | NO SERVICE | |
| WATER | ✓ | ✓ | | | |
| SEWER | ✓ | ✓ | | | |
| GAS | ✓ | ✓ | | | |
| NBN | ✓ | ✓ | | | |
| POWER | ✓ | ✓ | | | |
| STORMWATER CONNECTION PIT | ✓ | ✓ | | | |

NOTES: Services marked as Designed but will require builder/client to confirm position on site.

SCALE 1 : 200 @ A3

ALL DISTANCES ARE IN METRES

For a true to scale reproduction of this plan, plot it to A3 with the Paging Scaling set to None.

GDA 2020
LATITUDE: -31° 53' 20.63"
LONGITUDE: 115° 49' 23.69"

SOIL DESCRIPTION
SAND

LOT MISCLOSE
0.000

ESTATE NAME

MOSAIC
STAGE 4
LOT 213

CLIENT NAME

P. 227. L15 & M15- P. 227. L16 & M16

LOCATION
LOCALITY Balcatta
LOC. AUTH. City of Stirling

D.P. 422236VolumeFolio

DEPOSITED PLAN:- 422236DP 37311

N

MARKET

179.824

200'0" 11"

32.092

202 (L)
203 (L) 209 210 211 212 213 214 215 216
204 (L)
205 (L)
206 (L)
207 (L) 237 236 235 234 233 232 231 230
208 (L)

PORCELAIN WAY

PORCELAIN

N.T.S.

SEWER DESIGN

N

U/S 10.22 / Ø150 / 60
L= 6.7m
D/S 10.12

14.35 R0495
1.2 FN
206.9 FW

MARKET AVENUE

EASEMENT TO BE RESUMED ONCE LOTS ARE CREATED

U/S 10.41 / Ø300 / 217
L= 81.2m
D/S 10.04

210 14.90 211 14.90 212 14.90 213 14.90 214 14.95 215 15.00

236 15.10 235 15.20 234 15.30 233 15.35 232 15.40

N.T.S.

WATER DESIGN

N

AVENUE

Main PRELAID FOR FUTURE CONNECTION

F.P.
Ø100P-16

210 211 212 213 214 215

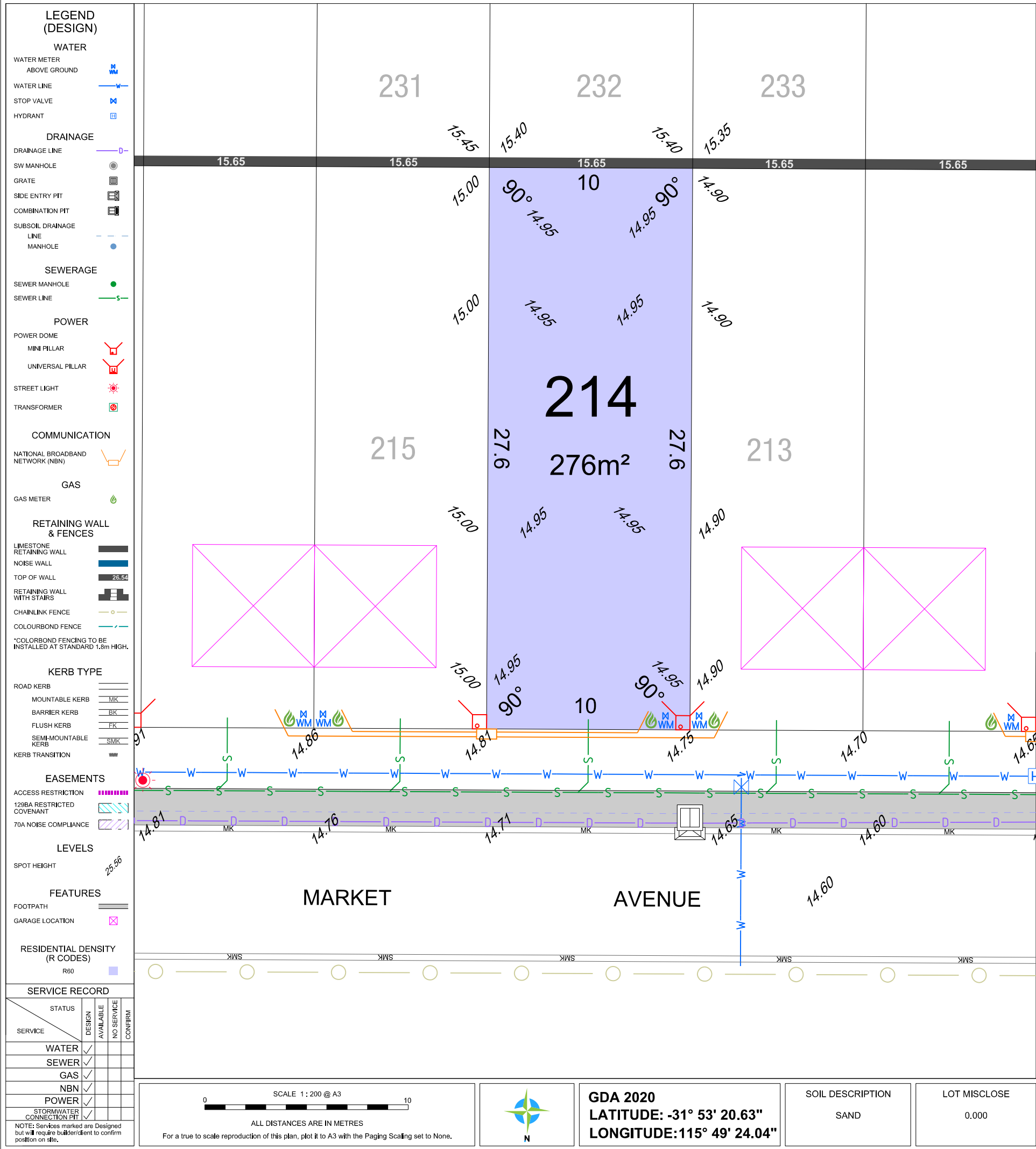
236 235 234 233 232 231

N.T.S.

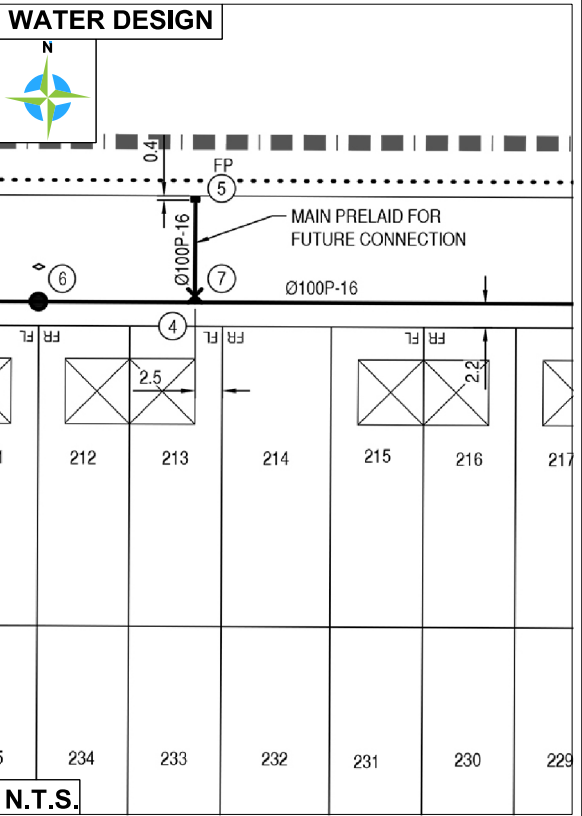
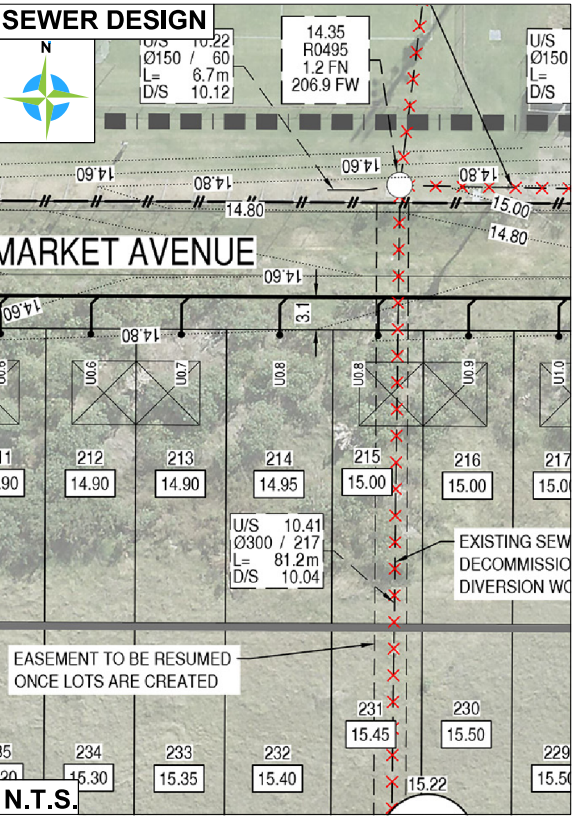
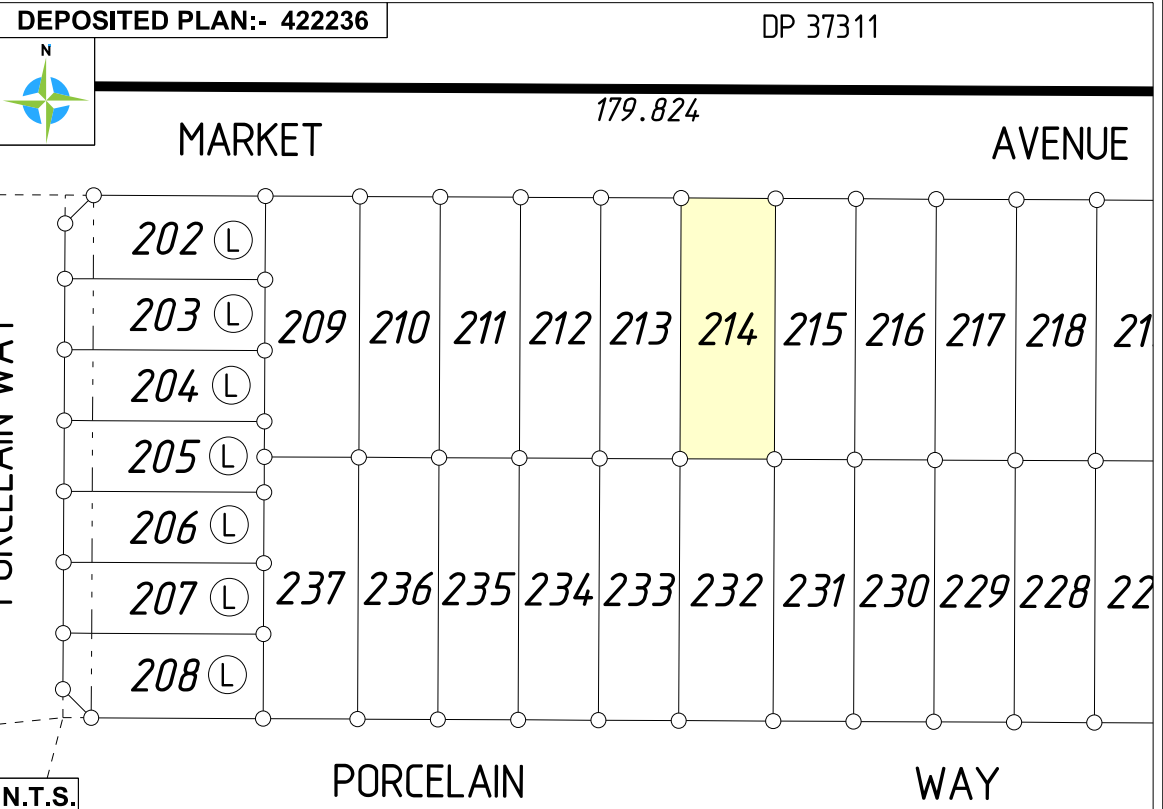
MCMULLEN NOLAN GROUP
Level 1, 2 Sabre Crescent
Jandakot, W.A. 6164
PO Box 3526, Success
W.A. 6964, Australia
Offices in: Perth | Melbourne | Kimberley | South West WA

Tel: (08) 6436 1599
Fax: (08) 6436 1500
info@mngsurvey.com.au
www.mngsurvey.com.au
ABN 90 009 363 311

All dimensions, areas and engineering are design only and subject to survey. The particulars on this brochure are supplied for information only and shall not be taken as a representation in any respect on the part of the Vendor or its agent. Authorities should be consulted when services are contained within lot boundaries as building restrictions may apply.
All retaining wall widths, services and associated easements are shown exaggerated for clarity.
Ref: 98975lip-057c Date: 30/09/2022



| | | |
|-------------|-------------|--------------------------------------|
| ESTATE NAME | CLIENT NAME | CONTRACT / JOB No. |
| MOSAIC | | |
| STAGE 4 | | |
| LOT 214 | LOCATION | UBD MAP REF: |
| | LOCALITY | P. 227. L15 & M15- P. 227. L16 & M16 |
| | LOC. AUTH. | |
| | D.P. 422236 | Volume Folio |





MCMULLEN NOLAN GROUP
Level 1, 2 Sabre Crescent
Jandakot, W.A. 6164
PO Box 3526, Success
W.A. 6964, Australia
Offices in: Perth | Melbourne | Kimberley | South West WA

Tel: (08) 6436 1599
Fax: (08) 6436 1500
info@mngsurvey.com.au
www.mngsurvey.com.au
ABN 90 009 363 311



ISO 9001 AS/NZS 4801 ISO 14001
GlobalMark.com.au

All dimensions, areas and engineering are design only and subject to survey. The particulars on this brochure are supplied for information only and shall not be taken as a representation in any respect on the part of the Vendor or its agent. Authorities should be consulted when services are contained within lot boundaries as building restrictions may apply.

All retaining wall widths, services and associated easements are shown exaggerated for clarity.

Ref: 98975lip-057c Date: 30/09/2022

LEGEND (DESIGN)

WATER

WATER METER ABOVE GROUND

WATER LINE

STOP VALVE

HYDRANT

DRAINAGE

DRAINAGE LINE

SW MANHOLE

GRATE

SIDE ENTRY PIT

COMBINATION PIT

SUBSOIL DRAINAGE LINE

MANHOLE

SEWERAGE

SEWER MANHOLE

SEWER LINE

POWER

POWER DOME

MINI PILLAR

UNIVERSAL PILLAR

STREET LIGHT

TRANSFORMER

COMMUNICATION

NATIONAL BROADBAND NETWORK (NBN)

GAS

GAS METER

RETAINING WALL & FENCES

LIMESTONE RETAINING WALL

NOISE WALL

TOP OF WALL

RETAINING WALL WITH STAIRS

CHAINLINK FENCE

COLOURBOND FENCE

*COLOURBOND FENCING TO BE INSTALLED AT STANDARD 1.8m HIGH.

KERB TYPE

ROAD KERB

MOUNTABLE KERB

BARRIER KERB

FLUSH KERB

SEMI-MOUNTABLE KERB

KERB TRANSITION

EASEMENTS

ACCESS RESTRICTION

1298A RESTRICTED COVENANT

70A NOISE COMPLIANCE

LEVELS

SPOT HEIGHT

FEATURES

FOOTPATH

GARAGE LOCATION

RESIDENTIAL DENSITY (R CODES)

R60

SERVICE RECORD

| SERVICE | STATUS | DESIGN | SERVICE | | CONFIRM |
|---------------------------|--------|--------|-----------|------------|---------|
| | | | AVAILABLE | NO SERVICE | |
| WATER | ✓ | ✓ | | | |
| SEWER | ✓ | ✓ | | | |
| GAS | ✓ | ✓ | | | |
| NBN | ✓ | ✓ | | | |
| POWER | ✓ | ✓ | | | |
| STORMWATER CONNECTION PIT | ✓ | ✓ | | | |

NOTE: Services marked as Designed but will require builder/client to confirm position on site.

SCALE 1 : 200 @ A3

ALL DISTANCES ARE IN METRES

For a true to scale reproduction of this plan, plot it to A3 with the Paging Scaling set to None.

GDA 2020

LATITUDE: -31° 53' 20.63"

LONGITUDE: 115° 49' 25.05"

SOIL DESCRIPTION

SAND

LOT MISCLOSE

0.000

ESTATE NAME

MOSAIC
STAGE 4
LOT 217

CLIENT NAME

CONTRACT / JOB No.

UBD MAP REF:
P. 227, L15 & M15- P. 227, L16 & M16

LOCATION
LOCALITY Balcatta
LOC. AUTH. City of Stirling

D.P. 422236 Volume Folio

DEPOSITED PLAN:- 422236 DP 37311

N

179.824

AVENUE

L 220
L 221
L 222
L 223
L 224
L 225
L 226

210 211 212 213 214 215 216 217 218 219

236 235 234 233 232 231 230 229 228 227

PORCELAIN WAY

PORCELAIN N.T.S.

SEWER DESIGN

N

U/S 12.10
Ø150 / 127
L= 56.8m
D/S 11.66

U/S 12.96
Ø150 / 186
L= 24.2m
D/S 12.83

14.60 14.80 14.80 15.00 15.00 14.80

14.60 3.1 15.00 15.00 15.00 15.00 15.10

214 215 216 217 218 219

14.95 15.00 15.00 15.00 15.00 15.10

10.41
Ø150 / 217
81.2m
10.04

EXISTING SEWER MAIN TO BE DECOMMISSIONED AND REMOVED ONCE DIVERSION WORKS ARE COMPLETED

231 230 229 228 227

15.45 15.50 15.50 15.60 15.70

232 231 230 229 228 227

15.22 15.50 15.60 15.70

N.T.S.

WATER DESIGN

N

MAIN PRELAID FOR FUTURE CONNECTION

Ø100P-16

FL FL FL FL FL

214 215 216 217 218 219

232 231 230 229 228 227

N.T.S.

MNG

MCMULLEN NOLAN GROUP
Level 1, 2 Sabre Crescent
Jandakot, W.A. 6164
PO Box 3526, Success
W.A. 6964, Australia
Offices in: Perth | Melbourne | Kimberley | South West WA

Tel: (08) 6436 1599
Fax: (08) 6436 1500
info@mngsurvey.com.au
www.mngsurvey.com.au
ABN 90 009 363 311

GlobeMark.com.au

All dimensions, areas and engineering are design only and subject to survey. The particulars on this brochure are supplied for information only and shall not be taken as a representation in any respect on the part of the Vendor or its agent. Authorities should be consulted when services are contained within lot boundaries as building restrictions may apply.
All retaining wall widths, services and associated easements are shown exaggerated for clarity.
Ref: 98975lip-057c Date: 30/09/2022

[illegible]

LEGEND (DESIGN)

WATER

WATER METER ABOVE GROUND
WATER LINE
STOP VALVE
HYDRANT

DRAINAGE

DRAINAGE LINE
SW MANHOLE
GRATE
SIDE ENTRY PIT
COMBINATION PIT
SUBSOIL DRAINAGE LINE
MANHOLE

SEWERAGE

SEWER MANHOLE
SEWER LINE

POWER

POWER DOME
MINI PILLAR
UNIVERSAL PILLAR
STREET LIGHT
TRANSFORMER

COMMUNICATION

NATIONAL BROADBAND NETWORK (NBN)

GAS

GAS METER

RETAINING WALL & FENCES

LIMESTONE RETAINING WALL
NOISE WALL
TOP OF WALL
RETAINING WALL WITH STAIRS
CHAINLINK FENCE
COLOURBOND FENCE
*COLORBOND FENCING TO BE INSTALLED AT STANDARD 1.8m HIGH.

KERB TYPE

ROAD KERB
MOUNTABLE KERB
BARRIER KERB
FLUSH KERB
SEMI-MOUNTABLE KERB
KERB TRANSITION

EASEMENTS

ACCESS RESTRICTION
129BA RESTRICTED COVENANT
70A NOISE COMPLIANCE

LEVELS

SPOT HEIGHT

FEATURES

FOOTPATH
GARAGE LOCATION

RESIDENTIAL DENSITY (R CODES)

R60

SERVICE RECORD

| SERVICE | STATUS | DESIGN | CONFIRM | |
|---------------------------|--------|--------|-----------|------------|
| | | | AVAILABLE | NO SERVICE |
| WATER | ✓ | ✓ | | |
| SEWER | ✓ | ✓ | | |
| GAS | ✓ | ✓ | | |
| NBN | ✓ | ✓ | | |
| POWER | ✓ | ✓ | | |
| STORMWATER CONNECTION PIT | ✓ | ✓ | | |

NOTES: Services marked as Designed but will require builder/client to confirm position on site.

SCALE 1 : 200 @ A3

GDA 2020
LATITUDE: -31° 53' 20.63"
LONGITUDE: 115° 49' 25.71"

SOIL DESCRIPTION
SAND

LOT MISCLOSE
0.000

| | |
|--|---|
| <div>ESTATE NAME</div> <div>MOSAIC</div> <div>STAGE 4</div> <div>LOT 219</div> | <div>CLIENT NAME</div> <div>CONTRACT / JOB No.</div> <div>UBD MAP REF: P. 227, L15 & M15- P. 227, L16 & M16</div> <div>LOCATION</div> <div>LOCALITY Balcatta</div> <div>LOC. AUTH. City of Stirling</div> <div>D.P. 422236</div> <div>Volume</div> <div>Folio</div> |
|--|---|

DEPOSITED PLAN:- 422236

DP 37311

SEWER DESIGN

WATER DESIGN

MC MULLEN NOLAN GROUP

Level 1, 2 Sabre Crescent

Jandakot, W.A. 6164

PO Box 3526, Success

W.A. 6964, Australia

Offices in: Perth | Melbourne | Kimberley | South West WA

Tel: (08) 6436 1599

Fax: (08) 6436 1500

info@mngsurvey.com.au

www.mngsurvey.com.au

ABN 90 009 363 311

All dimensions, areas and engineering are design only and subject to survey. The particulars on this brochure are supplied for information only and shall not be taken as a representation in any respect on the part of the Vendor or its agent. Authorities should be consulted when services are contained within lot boundaries as building restrictions may apply.

All retaining wall widths, services and associated easements are shown exaggerated for clarity.

Ref: 98975lip-057c Date: 30/09/2022

LEGEND (DESIGN)

WATER

WATER METER ABOVE GROUND

WATER LINE

STOP VALVE

HYDRANT

DRAINAGE

DRAINAGE LINE

SW MANHOLE

GRATE

SIDE ENTRY PIT

COMBINATION PIT

SUBSOIL DRAINAGE LINE

MANHOLE

SEWERAGE

SEWER MANHOLE

SEWER LINE

POWER

POWER DOME

MINI PILLAR

UNIVERSAL PILLAR

STREET LIGHT

TRANSFORMER

COMMUNICATION

NATIONAL BROADBAND NETWORK (NBN)

GAS

GAS METER

RETAINING WALL & FENCES

LIMESTONE RETAINING WALL

NOISE WALL

TOP OF WALL

RETAINING WALL WITH STAIRS

CHAINLINK FENCE

COLOURBOND FENCE

*COLOURBOND FENCING TO BE INSTALLED AT STANDARD 1.8m HIGH.

KERB TYPE

ROAD KERB

MOUNTABLE KERB

BARRIER KERB

FLUSH KERB

SEMI-MOUNTABLE KERB

KERB TRANSITION

EASEMENTS

ACCESS RESTRICTION

129BA RESTRICTED COVENANT

70A NOISE COMPLIANCE

LEVELS

SPOT HEIGHT

FEATURES

FOOTPATH

GARAGE LOCATION

RESIDENTIAL DENSITY (R CODES)

R60

SERVICE RECORD

| SERVICE | STATUS | DESIGN | SERVICE | | CONFIRM |
|---------------------------|--------|--------|-----------|------------|---------|
| | | | AVAILABLE | NO SERVICE | |
| WATER | ✓ | | | | |
| SEWER | ✓ | | | | |
| GAS | ✓ | | | | |
| NBN | ✓ | | | | |
| POWER | ✓ | | | | |
| STORMWATER CONNECTION PIT | ✓ | | | | |

NOTE: Services marked are Designed but will require builder/client to confirm position on site.

SCALE 1 : 200 @ A3

ALL DISTANCES ARE IN METRES

For a true to scale reproduction of this plan, plot it to A3 with the Paging Scaling set to None.

GDA 2020
LATITUDE: -31° 53' 20.34"
LONGITUDE: 115° 49' 26.29"

SOIL DESCRIPTION
SAND

LOT MISCLOSE
0.000

| ESTATE NAME | | CLIENT NAME | CONTRACT / JOB No. |
|--|--|---|--------------------|
| MOSAIC STAGE 4 LOT 220 | | UBD MAP REF: P. 227. L15 & M15- P. 227. L16 & M16 | |
| | | LOCATION LOCALITY Balcatta LOC. AUTH. City of Stirling | |
| | | D.P. 422236 | Volume Folio |
| DEPOSITED PLAN:- 422236 | | | |
| <p>A detailed site plan of Stage 4 Mosaic, showing lots 214 through 226. Lot 220 is highlighted in yellow. The plan includes Avenue at the top, Porcelain Way running vertically along the right side, and Karrinyup at the bottom right. Lot numbers are clearly marked for each lot. A north arrow is located in the top left corner.</p> | | | |
| <div><div><p>SEWER DESIGN</p><p>This diagram shows the sewer network for the area. It includes four manholes labeled AF5694, AF5693, AF5695, and AF5684. Each manhole has its depth (D) and diameter (DN) specified. Flow directions are indicated by arrows and labels like 'FUT. FLOW'. Dimensions for pipe segments are provided. A note states 'BE REMOVED ONCE COMPLETED' near some structures. A north arrow is present.</p></div><div><p>WATER DESIGN</p><p>This diagram illustrates the water supply system. It shows connections from a main supply line to individual lots (219, 220, 221, 222, 223, 224). Key features include valves (V), air release valves (ARV), and specific connection points. Pipe sizes are noted as Ø100P-16. A north arrow is included.</p></div></div> | | | |
| <p>MCMULLEN NOLAN GROUP Level 1, 2 Sabre Crescent Jandakot, W.A. 6164 PO Box 3526, Success W.A. 6964, Australia Offices in: Perth Melbourne Kimberley South West WA</p> <p>Tel: (08) 6436 1599 Fax: (08) 6436 1500 info@mngsurvey.com.au www.mngsurvey.com.au ABN 90 009 363 311</p> | | <p>All dimensions, areas and engineering are design only and subject to survey. The particulars on this brochure are supplied for information only and shall not be taken as a representation in any respect on the part of the Vendor or its agent. Authorities should be consulted when services are contained within lot boundaries as building restrictions may apply.</p> <p>All retaining wall widths, services and associated easements are shown exaggerated for clarity.</p> <p>Ref: 98975lip-057c Date: 30/09/2022</p> | |

LEGEND (DESIGN)

WATER

- WATER METER ABOVE GROUND
- WATER LINE
- STOP VALVE
- HYDRANT

DRAINAGE

- DRAINAGE LINE
- SW MANHOLE
- GRATE
- SIDE ENTRY PIT
- COMBINATION PIT
- SUBSOIL DRAINAGE LINE
- MANHOLE

SEWERAGE

- SEWER MANHOLE
- SEWER LINE

POWER

- POWER DOME
- MINI PILLAR
- UNIVERSAL PILLAR
- STREET LIGHT
- TRANSFORMER

COMMUNICATION

- NATIONAL BROADBAND NETWORK (NBN)

GAS

- GAS METER

RETAINING WALL & FENCES

- LIMESTONE RETAINING WALL
- NOISE WALL
- TOP OF WALL
- RETAINING WALL WITH STAIRS
- CHAINLINK FENCE
- COLOURBOND FENCE
- *COLOURBOND FENCING TO BE INSTALLED AT STANDARD 1.8m HIGH.

KERB TYPE

- ROAD KERB
- MOUNTABLE KERB
- BARRIER KERB
- FLUSH KERB
- SEMI-MOUNTABLE KERB
- KERB TRANSITION

EASEMENTS

- ACCESS RESTRICTION
- 129BA RESTRICTED COVENANT
- 70A NOISE COMPLIANCE

LEVELS

- SPOT HEIGHT

FEATURES

- FOOTPATH
- GARAGE LOCATION

RESIDENTIAL DENSITY (R CODES)

- R60

SERVICE RECORD

| SERVICE | STATUS | DESIGN | | | CONFIRM |
|---------------------------|--------|--------|-----------|------------|---------|
| | | DESIGN | AVAILABLE | NO SERVICE | |
| WATER | ✓ | | | | |
| SEWER | ✓ | | | | |
| GAS | ✓ | | | | |
| NBN | ✓ | | | | |
| POWER | ✓ | | | | |
| STORMWATER CONNECTION PIT | ✓ | | | | |

SCALE 1 : 200 @ A3

ALL DISTANCES ARE IN METRES

For a true to scale reproduction of this plan, plot it to A3 with the Paging Scaling set to None.

GDA 2020
LATITUDE: -31° 53' 20.61"
LONGITUDE: 115° 49' 26.29"

SOIL DESCRIPTION
SAND

LOT MISCLOSE
0.000

| ESTATE NAME | | CLIENT NAME | CONTRACT / JOB No. |
|-------------------------------------|--------|--|--------------------|
| MOSAIC STAGE 4 LOT 221 | | UBD MAP REF: P. 227. L15 & M15- P. 227. L16 & M16 | |
| | | | |
| LOCATION | | LOCALITY Balcatta | |
| LOC. AUTH. | | City of Stirling | |
| D.P. 422236 | Volume | Folio | |

DEPOSITED PLAN:- 422236

Avenue Way

(36.696)

KARRINYUP

SEWER DESIGN

N.T.S.

WATER DESIGN

N.T.S.

MCMULLEN NOLAN GROUP
Level 1, 2 Sabre Crescent
Jandakot, W.A. 6164
PO Box 3526, Success
W.A. 6964, Australia
Offices in: Perth | Melbourne | Kimberley | South West WA

Tel: (08) 6436 1599
Fax: (08) 6436 1500
info@mngsurvey.com.au
www.mngsurvey.com.au
ABN 90 009 363 311

All dimensions, areas and engineering are design only and subject to survey. The particulars on this brochure are supplied for information only and shall not be taken as a representation in any respect on the part of the Vendor or its agent. Authorities should be consulted when services are contained within lot boundaries as building restrictions may apply.
All retaining wall widths, services and associated easements are shown exaggerated for clarity.
Ref: 98975lip-057c Date: 30/09/2022

LEGEND (DESIGN)

WATER

- WATER METER ABOVE GROUND
- WATER LINE
- STOP VALVE
- HYDRANT

DRAINAGE

- DRAINAGE LINE
- SW MANHOLE
- GRATE
- SIDE ENTRY PIT
- COMBINATION PIT
- SUBSOIL DRAINAGE LINE
- MANHOLE

SEWERAGE

- SEWER MANHOLE
- SEWER LINE

POWER

- POWER DOME
- MINI PILLAR
- UNIVERSAL PILLAR
- STREET LIGHT
- TRANSFORMER

COMMUNICATION

- NATIONAL BROADBAND NETWORK (NBN)

GAS

- GAS METER

RETAINING WALL & FENCES

- LIMESTONE RETAINING WALL
- NOISE WALL
- TOP OF WALL
- RETAINING WALL WITH STAIRS
- CHAINLINK FENCE
- COLOURBOND FENCE

*COLOURBOND FENCING TO BE INSTALLED AT STANDARD 1.8m HIGH.

KERB TYPE

- ROAD KERB
- MOUNTABLE KERB
- BARRIER KERB
- FLUSH KERB
- SEMI-MOUNTABLE KERB
- KERB TRANSITION

EASEMENTS

- ACCESS RESTRICTION
- 129BA RESTRICTED COVENANT
- 70A NOISE COMPLIANCE

LEVELS

- SPOT HEIGHT

FEATURES

- FOOTPATH
- GARAGE LOCATION

RESIDENTIAL DENSITY (R CODES)

- R60

SERVICE RECORD

| SERVICE | STATUS | DESIGN | CONFIRM | |
|---------------------------|--------|--------|-----------|------------|
| | | | AVAILABLE | NO SERVICE |
| WATER | ✓ | ✓ | | |
| SEWER | ✓ | ✓ | | |
| GAS | ✓ | ✓ | | |
| NBN | ✓ | ✓ | | |
| POWER | ✓ | ✓ | | |
| STORMWATER CONNECTION PIT | ✓ | ✓ | | |

SCALE 1 : 200 @ A3

GDA 2020
LATITUDE: -31° 53' 21.33"
LONGITUDE: 115° 49' 26.29"

SOIL DESCRIPTION
SAND

LOT MISCLOSE
0.000

[illegible]

LEGEND (DESIGN)

WATER

- WATER METER ABOVE GROUND
- WATER LINE
- STOP VALVE
- HYDRANT

DRAINAGE

- DRAINAGE LINE
- SW MANHOLE
- GRATE
- SIDE ENTRY PIT
- COMBINATION PIT
- SUBSOIL DRAINAGE LINE
- MANHOLE

SEWERAGE

- SEWER MANHOLE
- SEWER LINE

POWER

- POWER DOME
- MINI PILLAR
- UNIVERSAL PILLAR
- STREET LIGHT
- TRANSFORMER

COMMUNICATION

- NATIONAL BROADBAND NETWORK (NBN)

GAS

- GAS METER

RETAINING WALL & FENCES

- LIMESTONE RETAINING WALL
- NOISE WALL
- TOP OF WALL
- RETAINING WALL WITH STAIRS
- CHAINLINK FENCE
- COLOURBOND FENCE
- *COLORBOND FENCING TO BE INSTALLED AT STANDARD 1.8m HIGH.

KERB TYPE

- ROAD KERB
- MOUNTABLE KERB
- BARRIER KERB
- FLUSH KERB
- SEMI-MOUNTABLE KERB
- KERB TRANSITION

EASEMENTS

- ACCESS RESTRICTION
- 129BA RESTRICTED COVENANT
- 70A NOISE COMPLIANCE

LEVELS

- SPOT HEIGHT

FEATURES

- FOOTPATH
- GARAGE LOCATION

RESIDENTIAL DENSITY (R CODES)

- R60

SERVICE RECORD

| SERVICE | STATUS | DESIGN | | | CONFIRM |
|---------------------------|--------|--------|-----------|------------|---------|
| | | DESIGN | AVAILABLE | NO SERVICE | |
| WATER | | | | | |
| SEWER | | | | | |
| GAS | | | | | |
| NBN | | | | | |
| POWER | | | | | |
| STORMWATER CONNECTION PIT | | | | | |

SCALE 1 : 200 @ A3

ALL DISTANCES ARE IN METRES

For a true to scale reproduction of this plan, plot it to A3 with the Paging Scaling set to None.

GDA 2020
LATITUDE: -31° 53' 21.58"
LONGITUDE: 115° 49' 26.29"

SOIL DESCRIPTION
SAND

LOT MISCLOSE
0.000

| ESTATE NAME | | CLIENT NAME | CONTRACT / JOB No. |
|---|--|--|--------------------|
| MOSAIC STAGE 4 LOT 225 | | UBD MAP REF: P. 227, L15 & M15- P. 227, L16 & M16 | |
| | | | |
| LOCATION | | LOCALITY Balcatta | |
| LOC. AUTH. | | City of Stirling | |
| D.P. 422236 | | Volume | Folio |
| DEPOSITED PLAN:- 422236 | | | |
| <p>A detailed site plan for Stage 4 of the Mosaic development. It shows a grid of lots numbered 211 through 235. Lot 225 is highlighted in yellow. To the right of the lot grid is Porcelain Way, and above it is Avenue. A north arrow is located in the top left corner. The plan also indicates various easements and boundaries.</p> | | | |
| <p>A technical diagram titled "SEWER DESIGN". It shows the proposed sewer network for the area. Key features include: <ul style="list-style-type: none">Alignments for 150mm and 300mm diameter sewers.Manhole locations labeled U0.7 BT, U0.8 BT, etc., with their respective elevations (e.g., 15.50, 15.60).A new sewer access chamber to be constructed over the existing alignment.Dimensions for pipe lengths and offsets.A note stating: "NEW SEWER ACCESS CHAMBER TO BE CONSTRUCTED OVER EXISTING ALIGNMENT TO LEVELS SHOWN. WORKS TO BE COMPLETED IN CONJUNCTION WITH THE WATER CORPORATION"</p> | | | |
| <p>A technical diagram titled "WATER DESIGN". It shows the water supply and drainage infrastructure. Key features include: <ul style="list-style-type: none">Water supply lines and valves.Drainage paths and connections.Dimensions for pipe diameters (e.g., Ø100P-16) and other parameters.A reference to the MNG Plan.</p> | | | |
| <p>MCMULLEN NOLAN GROUP Level 1, 2 Sabre Crescent Jandakot, W.A. 6164 PO Box 3526, Success W.A. 6964, Australia Offices in: Perth Melbourne Kimberley South West WA</p> | | <p>Tel: (08) 6436 1599 Fax: (08) 6436 1500 info@mngsurvey.com.au www.mngsurvey.com.au ABN 90 009 363 311</p> | |

LEGEND (DESIGN)

WATER

WATER METER ABOVE GROUND

WATER LINE

STOP VALVE

HYDRANT

DRAINAGE

DRAINAGE LINE

SW MANHOLE

GRATE

SIDE ENTRY PIT

COMBINATION PIT

SUBSOIL DRAINAGE LINE

MANHOLE

SEWERAGE

SEWER MANHOLE

SEWER LINE

POWER

POWER DOME

MINI PILLAR

UNIVERSAL PILLAR

STREET LIGHT

TRANSFORMER

COMMUNICATION

NATIONAL BROADBAND NETWORK (NBN)

GAS

GAS METER

RETAINING WALL & FENCES

LIMESTONE RETAINING WALL

NOISE WALL

TOP OF WALL

RETAINING WALL WITH STAIRS

CHAINLINK FENCE

COLOURBOND FENCE

*COLORBOND FENCING TO BE INSTALLED AT STANDARD 1.8m HIGH.

KERB TYPE

ROAD KERB

MOUNTABLE KERB

BARRIER KERB

FLUSH KERB

SEMI-MOUNTABLE KERB

KERB TRANSITION

EASEMENTS

ACCESS RESTRICTION

129BA RESTRICTED COVENANT

70A NOISE COMPLIANCE

LEVELS

SPOT HEIGHT

FEATURES

FOOTPATH

GARAGE LOCATION

RESIDENTIAL DENSITY (R CODES)

R60

SERVICE RECORD

| SERVICE | STATUS | DESIGN | | | CONFIRM |
|---------------------------|--------|--------|-----------|------------|---------|
| | | DESIGN | AVAILABLE | NO SERVICE | |
| WATER | ✓ | | | | |
| SEWER | ✓ | | | | |
| GAS | ✓ | | | | |
| NBN | ✓ | | | | |
| POWER | ✓ | | | | |
| STORMWATER CONNECTION PIT | ✓ | | | | |

SCALE 1 : 200 @ A3

ALL DISTANCES ARE IN METRES

For a true to scale reproduction of this plan, plot it to A3 with the Paging Scaling set to None.

DA 2020

LATITUDE: -31° 53' 21.84"

LONGITUDE: 115° 49' 26.29"

SOIL DESCRIPTION

SAND

LOT MISCLOSE

0.000

| | | | | | |
|--|--|--|--|---|--|
| ESTATE NAME | | CLIENT NAME | | CONTRACT / JOB No. | |
| MOSAIC STAGE 4 LOT 226 | | UBD MAP REF: P. 227, L15 & M15- P. 227, L16 & M16 | | | |
| | | LOCATION LOCALITY Balcatta LOC. AUTH. City of Stirling | | | |
| D.P. 422236 | | Volume | | Folio | |
| DEPOSITED PLAN:- 422236 | | | | | |
| <p>Avenue</p> <p>Porcelain Way</p> <p>Karrinyup Way</p> <p>Lot 226 highlighted in yellow.</p> | | | | | |
| N.T.S. | | | | | |
| SEWER DESIGN | | | WATER DESIGN | | |
| <p>U/S 10.37 Ø300 / 396 L= 55.5m D/S 10.23</p> <p>NEW SEWER ACCESS CHAMBER TO BE CONSTRUCTED OVER EXISTING ALIGNMENT TO LEVELS SHOWN. WORKS TO BE COMPLETED IN CONJUNCTION WITH THE WATER CORPORATION FOR CONNECTION OF NEW MAIN BEING RELAYED</p> | | | <p>REFER TO MNG PL FOR UNDERGROUND LOCATION SURVEY</p> | | |
| N.T.S. | | | N.T.S. | | |
| <p>MCMULLEN NOLAN GROUP Level 1, 2 Sabre Crescent Jandakot, W.A. 6164 PO Box 3526, Success W.A. 6964, Australia Offices in: Perth Melbourne Kimberley South West WA</p> <p>Tel: (08) 6436 1599 Fax: (08) 6436 1500 info@mngsurvey.com.au www.mngsurvey.com.au ABN 90 009 363 311</p> | | | | <p>All dimensions, areas and engineering are design only and subject to survey. The particulars on this brochure are supplied for information only and shall not be taken as a representation in any respect on the part of the Vendor or its agent. Authorities should be consulted when services are contained within lot boundaries as building restrictions may apply.</p> <p>All retaining wall widths, services and associated easements are shown exaggerated for clarity.</p> <p>Ref: 98975lip-057c Date: 30/09/2022</p> | |

ESTATE NAME

MOSAIC
STAGE 4
LOT 227

CLIENT NAME

LOCATION
LOCALITY Balcatta
LOC. AUTH. City of Stirling

D.P. 422236 Volume Folio

CONTRACT / JOB No.

UBD MAP REF:
P. 227. L15 & M15- P. 227. L16 & M16

DEPOSITED PLAN:- 422236

N
W
E
S
Avenue
WAY
PORCELAIN WAY
KARRINYUP
87 DP 27768
238
(117.89)
L 220
L 221
L 222
L 223
L 224
L 225
L 226
13 214 215 216 217 218 219
33 232 231 230 229 228 227

SEWER DESIGN

N
FR MAIN TO BE REINSTALLED AND REMOVED ONCE SEWER WORKS ARE COMPLETED
U/S 13.90 Ø150 / 198 L= 55.5m D/S 13.62
BT BT BT
3.1m ALIGNMENT Ø150 LOT SEWER
3.1m ALIGNMENT Ø300 DEEP SEWER
U/S 10.37 Ø300 / 396 L= 55.5m D/S 10.23
N.T.S.
100

WATER DESIGN

N
EXISTING Ø380S-5 WATER PIPE
Ø100P-16
100
N.T.S.

MCMULLEN NOLAN GROUP
Level 1, 2 Sabre Crescent
Jandakot, W.A. 6164
PO Box 3526, Success
W.A. 6964, Australia
Offices in: Perth | Melbourne | Kimberley | South West WA

Tel: (08) 6436 1599
Fax: (08) 6436 1500
info@mngsurvey.com.au
www.mngsurvey.com.au
ABN 90 009 363 311

GlobalMark.com.au

All dimensions, areas and engineering are design only and subject to survey. The particulars on this brochure are supplied for information only and shall not be taken as a representation in any respect on the part of the Vendor or its agent. Authorities should be consulted when services are contained within lot boundaries as building restrictions may apply.

All retaining wall widths, services and associated easements are shown exaggerated for clarity.
Ref: 98975lip-057c Date: 30/09/2022

ESTATE NAME

MOSAIC

STAGE 4

LOT 230

CLIENT NAME

LOCATION

Balcatta

LOCALITY

City of Stirling

D.P.

422236

CONTRACT / JOB No.

UBD MAP REF:

P. 227. L15 & M15- P. 227. L16 & M16

VOLUME

Volume

Folio

DEPOSITED PLAN:-

422236

N

Avenue

(L) 220

(L) 221

(L) 222

(L) 223

(L) 224

(L) 225

(L) 226

Way

KARRINYUP

87 DP 27768

238

(136.696)

(175.81)

(117.89)

N.T.S.

SEWER DESIGN

N

EXISTING SEWER MAIN TO BE DECOMMISSIONED AND REMOVED ONCE DIVERSION WORKS ARE COMPLETED

SUMMED RATED

AF5691 D=5.0m I.O.

U/S 13.90 Ø150 / 198 L=55.5m D/S 13.62

MAINTAIN EXISTING SECTION OF PIPE WORK

R0499 1.2 FN 0.0 FSW U/S 10.55 Ø225 / 232 L=28.4m

N.T.S.

WATER DESIGN

N

FR FL

FL

Ø100P-16

CERAMIN WAY

EXISTING Ø380S-5 WATER PIPE

REFER TO CONNECTION DETAIL 'A'

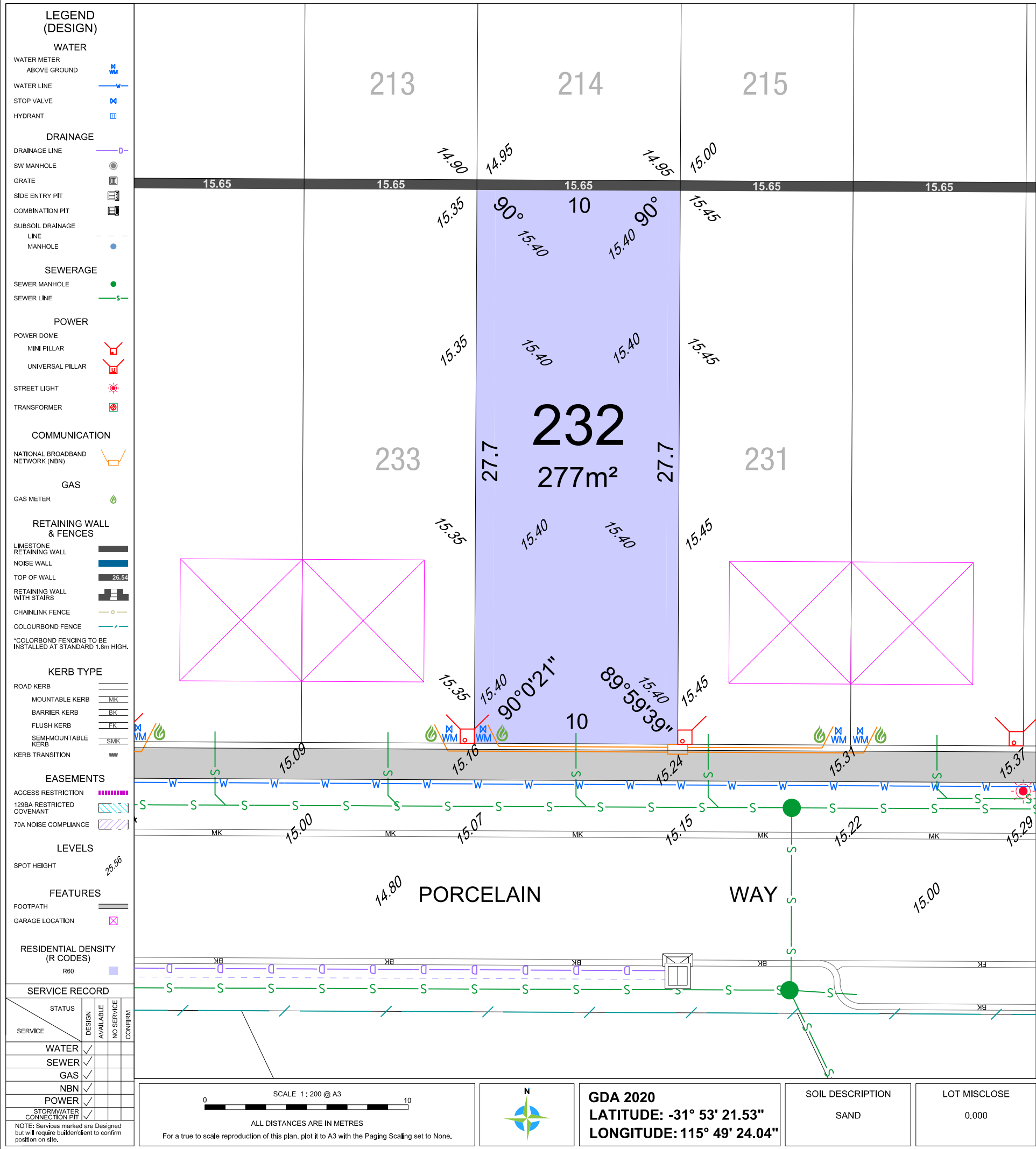
N.T.S.

MCMULLEN NOLAN GROUP
Level 1, 2 Sabre Crescent
Jandakot, W.A. 6164
PO Box 3526, Success
W.A. 6964, Australia
Offices in: Perth | Melbourne | Kimberley | South West WA

Tel: (08) 6436 1599
Fax: (08) 6436 1500
info@mngsurvey.com.au
www.mngsurvey.com.au
ABN 90 009 363 311

All dimensions, areas and engineering are design only and subject to survey. The particulars on this brochure are supplied for information only and shall not be taken as a representation in any respect on the part of the Vendor or its agent. Authorities should be consulted when services are contained within lot boundaries as building restrictions may apply.

All retaining wall widths, services and associated easements are shown exaggerated for clarity.
Ref: 98975lip-057c Date: 30/09/2022



LEGEND (DESIGN)

WATER

WATER METER ABOVE GROUND

WATER LINE

STOP VALVE

HYDRANT

DRAINAGE

DRAINAGE LINE

SW MANHOLE

GRATE

SIDE ENTRY PIT

COMBINATION PIT

SUBSOIL DRAINAGE LINE

LINE MANHOLE

SEWERAGE

SEWER MANHOLE

SEWER LINE

POWER

POWER DOME

MINI PILLAR

UNIVERSAL PILLAR

STREET LIGHT

TRANSFORMER

COMMUNICATION

NATIONAL BROADBAND NETWORK (NBN)

GAS

GAS METER

RETAINING WALL & FENCES

LIMESTONE RETAINING WALL

NOISE WALL

TOP OF WALL

RETAINING WALL WITH STAIRS

CHAINLINK FENCE

COLOURBOND FENCE

*COLORBOND FENCING TO BE INSTALLED AT STANDARD 1.8m HIGH.

KERB TYPE

ROAD KERB

MOUNTABLE KERB

BARRIER KERB

FLUSH KERB

SEMI-MOUNTABLE KERB

KERB TRANSITION

EASEMENTS

ACCESS RESTRICTION

129BA RESTRICTED COVENANT

70A NOISE COMPLIANCE

LEVELS

SPOT HEIGHT

FEATURES

FOOTPATH

GARAGE LOCATION

RESIDENTIAL DENSITY (R CODES)

R60

SERVICE RECORD

| SERVICE | STATUS | DESIGN | CONFIRM | |
|---------------------------|--------|--------|-----------|------------|
| | | | AVAILABLE | NO SERVICE |
| WATER | ✓ | ✓ | | |
| SEWER | ✓ | ✓ | | |
| GAS | ✓ | ✓ | | |
| NBN | ✓ | ✓ | | |
| POWER | ✓ | ✓ | | |
| STORMWATER CONNECTION PIT | ✓ | ✓ | | |

NOTE: Services marked are Designed but will require builder/client to confirm position on site.

SCALE 1 : 200 @ A3

ALL DISTANCES ARE IN METRES

For a true to scale reproduction of this plan, plot it to A3 with the Paging Scaling set to None.

GD A 2020

LATITUDE:-31° 53' 21.53"

LONGITUDE:115° 49' 23.36"

SOIL DESCRIPTION

SAND

LOT MISCLOSE

0.000

ESTATE NAME

MOSAIC

STAGE 4

LOT 234

CLIENT NAME

CONTRACT / JOB No.

UBD MAP REF:

P. 227. L15 & M15- P. 227. L16 & M16

LOCATION

LOCALITY

Balcatta

LOC. AUTH.

City of Stirling

D.P. 422236

Volume

Folio

DEPOSITED PLAN:- 422236

179.824

N

KET

AVENUE

02 (L)

03 (L)

04 (L)

05 (L)

06 (L)

07 (L)

08 (L)

209

210

211

212

213

214

215

216

217

218

219

(L) 220

(L) 221

(L) 222

(L) 223

(L) 224

(L) 225

(L) 226

237

236

235

234

233

232

231

230

229

228

227

(L) 220

(L) 221

(L) 222

(L) 223

(L) 224

(L) 225

(L) 226

PORCELAIN

WAY

N.T.S.

SEWER DESIGN

N

14.30

14.90

14.90

14.90

14.95

15.00

U/S 10.41

Ø300 / 217

L= 81.2m

D/S 10.04

EASEMENT TO BE RESUMED ONCE LOTS ARE CREATED

237

236

235

234

233

232

15.00

15.10

15.20

15.30

15.35

15.40

15.00

15.20

15.00

14.80

14.60

14.80

U/S 12.53

Ø150 / 199

L= 83.9m

D/S 12.11

U/S 10.82

Ø300 / 188

L= 72.8m

D/S 10.44

15.15

R0499

1.2 FN

0.0 FSW

10

Ø225 / 4

L= 28.0

MANHOLE LID TO BE RAISED FROM RL15.15 TO RL15.52

ISH FLUSH WITH PROPOSED FINISHED VERGE LEVELS.

CTOR TO ARRANGE FOR WATER CORPORATION TO

WORKS AT THE DEVELOPERS EXPENSE

N.T.S.

N

212

213

214

37

236

235

234

233

232

231

FR FL

FR FL

FR FL

Ø100P-16

2.0

PORCELAIN WAY

131

132

REFER

DETAIL

N.T.S.

MCMULLEN NOLAN GROUP
Level 1, 2 Sabre Crescent
Jandakot, W.A. 6164
PO Box 3526, Success
W.A. 6964, Australia
Offices in: Perth | Melbourne | Kimberley | South West WA

Tel: (08) 6436 1599
Fax: (08) 6436 1500
info@mngsurvey.com.au
www.mngsurvey.com.au
ABN 90 009 363 311

ISO 9001 AS/NZS 4801 1000501
GlobeMark.com.au

All dimensions, areas and engineering are design only and subject to survey. The particulars on this brochure are supplied for information only and shall not be taken as a representation in any respect on the part of the Vendor or its agent. Authorities should be consulted when services are contained within lot boundaries as building restrictions may apply.

All retaining wall widths, services and associated easements are shown exaggerated for clarity.

Ref: 98975lip-057c Date: 30/09/2022

LEGEND (DESIGN)

WATER

WATER METER ABOVE GROUND

WATER LINE

STOP VALVE

HYDRANT

DRAINAGE

DRAINAGE LINE

SW MANHOLE

GRATE

SIDE ENTRY PIT

COMBINATION PIT

SUBSOIL DRAINAGE LINE

MANHOLE

SEWERAGE

SEWER MANHOLE

SEWER LINE

POWER

POWER DOME

MINI PILLAR

UNIVERSAL PILLAR

STREET LIGHT

TRANSFORMER

COMMUNICATION

NATIONAL BROADBAND NETWORK (NBN)

GAS

GAS METER

RETAINING WALL & FENCES

LIMESTONE RETAINING WALL

NOISE WALL

TOP OF WALL

RETAINING WALL WITH STAIRS

CHAINLINK FENCE

COLOURBOND FENCE

*COLORBOND FENCING TO BE INSTALLED AT STANDARD 1.8m HIGH.

KERB TYPE

ROAD KERB

MOUNTABLE KERB

BARRIER KERB

FLUSH KERB

SEMI-MOUNTABLE KERB

KERB TRANSITION

EASEMENTS

ACCESS RESTRICTION

129BA RESTRICTED COVENANT

70A NOISE COMPLIANCE

LEVELS

SPOT HEIGHT

FEATURES

FOOTPATH

GARAGE LOCATION

RESIDENTIAL DENSITY (R CODES)

R60

SERVICE RECORD

| SERVICE | STATUS | DESIGN | CONFIRM | |
|---------------------------|--------|--------|-----------|------------|
| | | | AVAILABLE | NO SERVICE |
| WATER | ✓ | ✓ | | |
| SEWER | ✓ | ✓ | | |
| GAS | ✓ | ✓ | | |
| NBN | ✓ | ✓ | | |
| POWER | ✓ | ✓ | | |
| STORMWATER CONNECTION PIT | ✓ | ✓ | | |

NOTE: Services marked are Designed but will require builder/client to confirm position on site.

SCALE 1 : 200 @ A3

ALL DISTANCES ARE IN METRES

For a true to scale reproduction of this plan, plot it to A3 with the Paging Scaling set to None.

GDA 2020

LATITUDE: -31° 53' 21.52"

LONGITUDE: 115° 49' 22.36"

SOIL DESCRIPTION

SAND

LOT MISCLOSE

0.000

| | | | | | |
|--|--|--|---|--------------------|--|
| ESTATE NAME | | CLIENT NAME | | CONTRACT / JOB No. | |
| MOSAIC STAGE 4 LOT 237 | | UBD MAP REF: P. 227. L15 & M15- P. 227. L16 & M16 | | | |
| | | LOCATION LOCALITY Balcatta LOC. AUTH. City of Stirling | | | |
| | | D.P. 422236 | Volume | Folio | |
| DEPOSITED PLAN:- 422236 | | | | | |
| MARKET 179.824 | | | | | |
| <p>SEE</p> | | | | | |
| N.T.S. 766 p. orig) | | | | | |
| SEWER DESIGN | | | WATER DESIGN | | |
| | | | | | |
| N.T.S. | | | N.T.S. | | |
| | | | | | |
| <p>MCMULLEN NOLAN GROUP Level 1, 2 Sabre Crescent Jandakot, W.A. 6164 PO Box 3526, Success W.A. 6964, Australia Offices in: Perth Melbourne Kimberley South West WA</p> <p>Tel: (08) 6436 1599 Fax: (08) 6436 1500 info@mngsurvey.com.au www.mngsurvey.com.au ABN 90 009 363 311</p> | | | <p>All dimensions, areas and engineering are design only and subject to survey. The particulars on this brochure are supplied for information only and shall not be taken as a representation in any respect on the part of the Vendor or its agent. Authorities should be consulted when services are contained within lot boundaries as building restrictions may apply.</p> <p>All retaining wall widths, services and associated easements are shown exaggerated for clarity.</p> <p>Ref: 98975lip-057c Date: 30/09/2022</p> | | |